

**Insumos
Morfológicos**
Catálogo
Plastinados
2023-2024



MORFOMED
Insumos Morfológicos



Muestra de detalles



PC-001

Joints & ligaments specimen

Due to the limit of time and anatomical skills, the delicate dissection of all the joints and ligaments is unavailable in anatomical teaching class. Therefore, the teaching specimens are necessary for the students to understand and remember. This specimen displays the skeleton, joints and ligaments. Around the joints, some deep muscles are remained so that the origins are clear, which will be helpful for the students to understand the role of the muscles during movement.



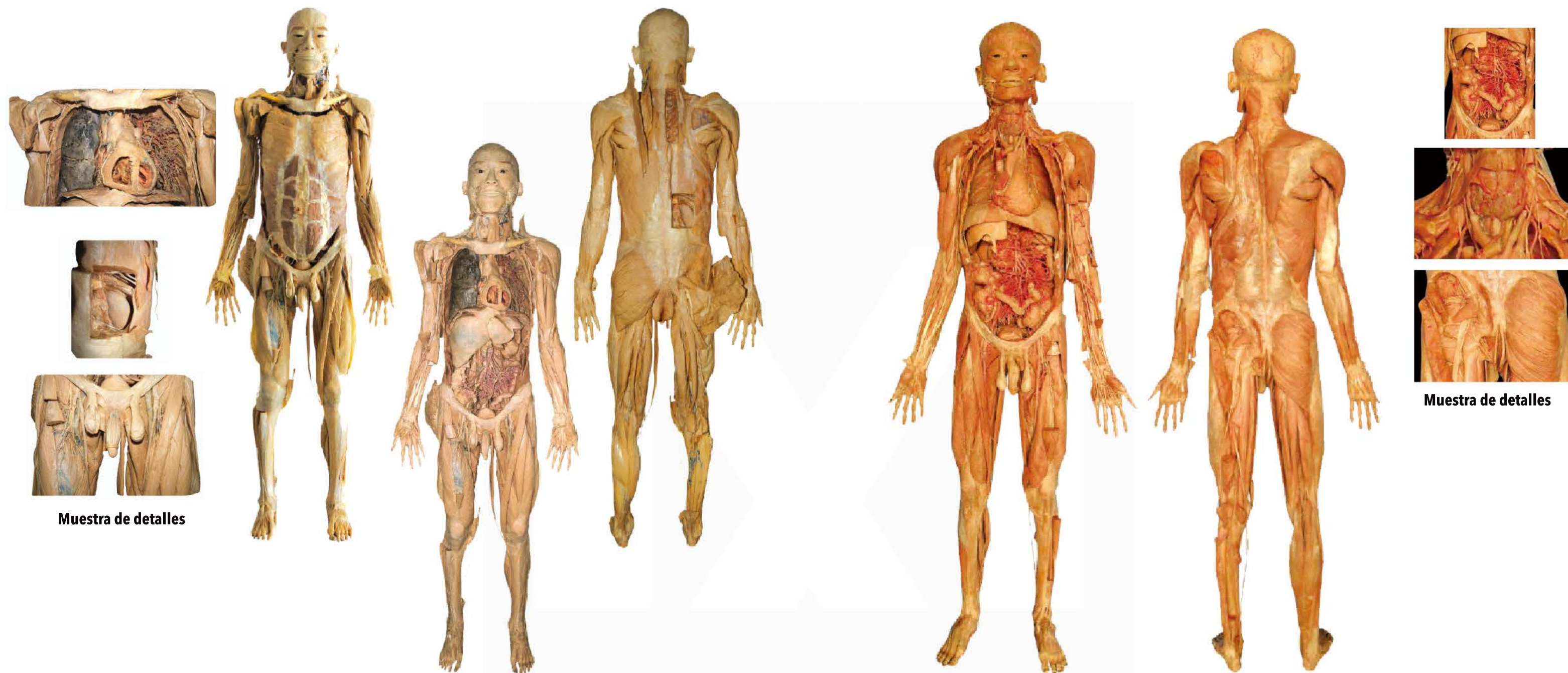
PC-002

All muscular specimen(male & female)

Skeletal muscle is an important portion of locomotive system and is also the emphases of teaching. After delicately dissected, the specimen displays the skeletal muscles of the whole body and some cutaneous nerves and superficial arteries which are remained simultaneously. One side of the specimen displays superficial layer muscles, and the other side displays deep layer muscles. By means of the contrast between the two sides, deeply understand the positions and relationship of the muscles.



Muestra de detalles



Muestra de detalles

Muestra de detalles

PC-003

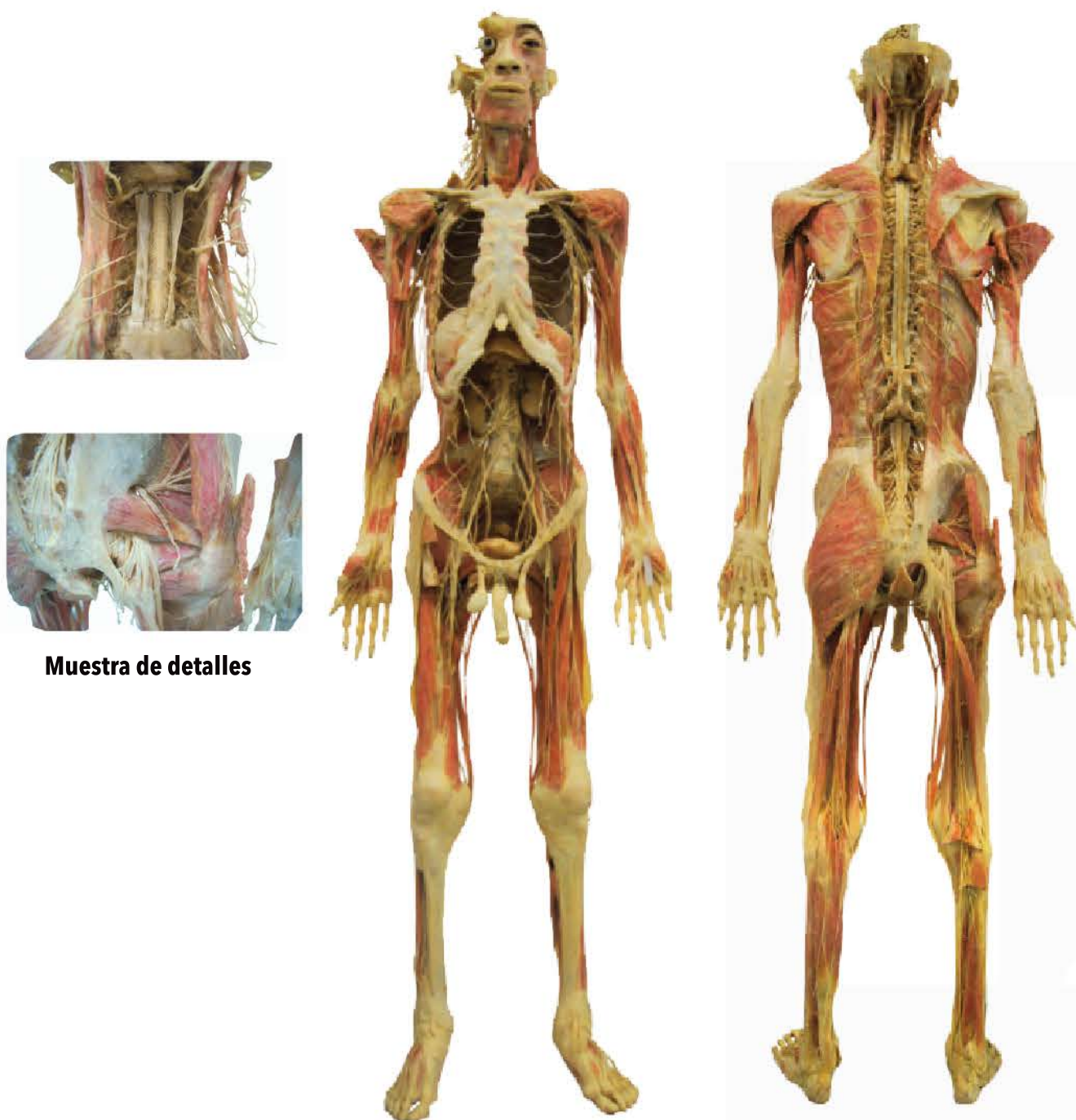
The whole visceral specimen(male & female)

Thoracic wall and abdominal wall are removed to display organs in the thoracic cavity and abdominal cavity. In the thoracic cavity, one lung is remained, while the other one is removed and the bronchial tree is remained to clearly display not only the inner structure of lung but also the intercostal nerves and blood vessels along the ribs. By means of this kind of specime understand the forms, positions and relationships of the organs.

PC-004

All arteries specimen(male & female)

The specimen with partial muscles supported by the skeleton systemically displays the larger arteries and their branches which have been delicately dissected. Including common carotid artery and its branches, subclavian artery and its branches, thoracic aorta and its branches, abdominal aorta and its branches, internal iliac artery and its branches, external iliac artery and its branches, etc.

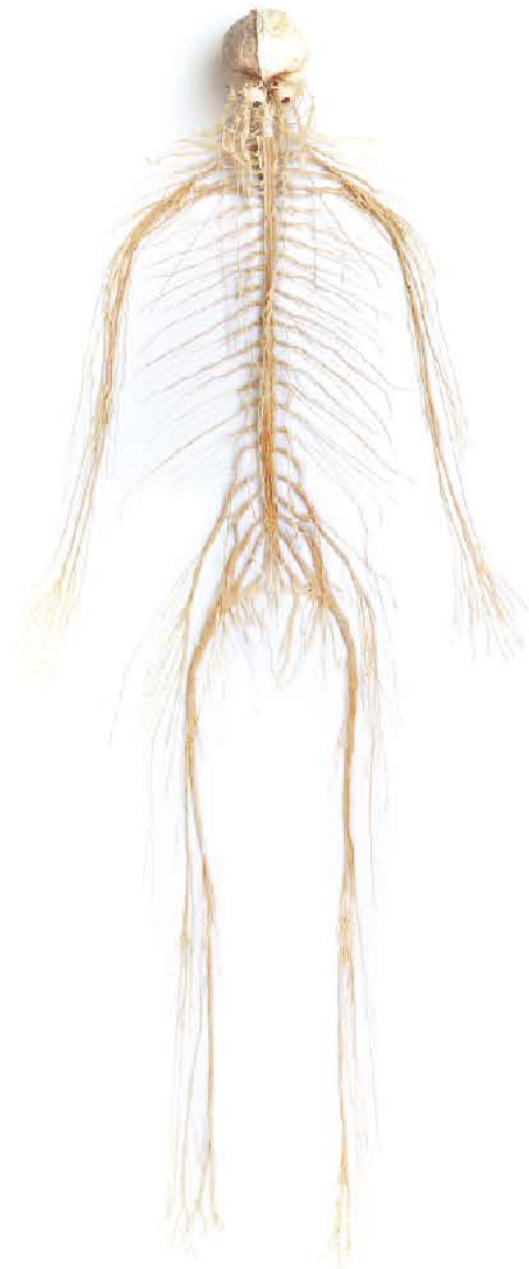


Muestra de detalles

PC-005

All nerves specimen (male & female)

The structure of the nervous system is very complicated, which is the key and difficult point in the teaching of anatomy. The specimen with partial muscles supported by the skeleton systematically removes other tissues and structures, focusing on the central nervous system and the peripheral nervous system, is a comprehensive, systematic study and understanding of the nervous system.



SN-001
General arrangement of nervous system
In vitro, dissected to show the central nervous system and peripheral nervous system.

SN-002
Brain and spinal cord
In vitro, dissected to show the whole brain, external features of the spinal cord and nerve roots.



SN-003
The spinal cord
In vitro, dissected to show the external features of the spinal cord.

SN-004
The spinal cord
In situ, dissected to show the spinal cord with brain stem.



SN-005
The meninges of spinal cord
Dissected to show the spinal dura mater and the arachnoid mater.



SN-006
External features of the brain
Dissected to show the external features of the whole brain.



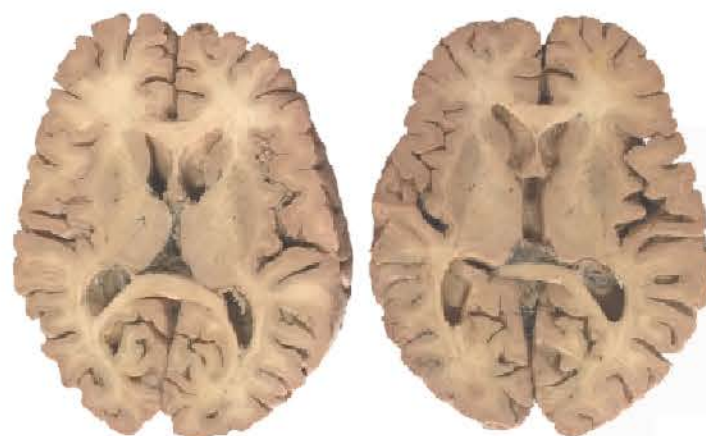
SN-007
The brain and 12 pairs of cranial nerves
Dissected to show the whole brain and 12 pairs of cranial nerves roots intact.



SN-008
Median sagittal section of the brain
Unilateral, median sagittal section, dissected to show the inner structures of the brain.



SN-009
Horizontal section of the brain
Unilateral, horizontal section, dissected to show the inner structures of the brain.



SN-010

Horizontal section of the whole brain

Whole brain, horizontal section, two parts, dissected to show the inner structures of the brain.



SN-012

Horizontal section of the whole brain

Whole brain, according to canthomeatal line, horizontal section, about 10-12 slices, 10mm.



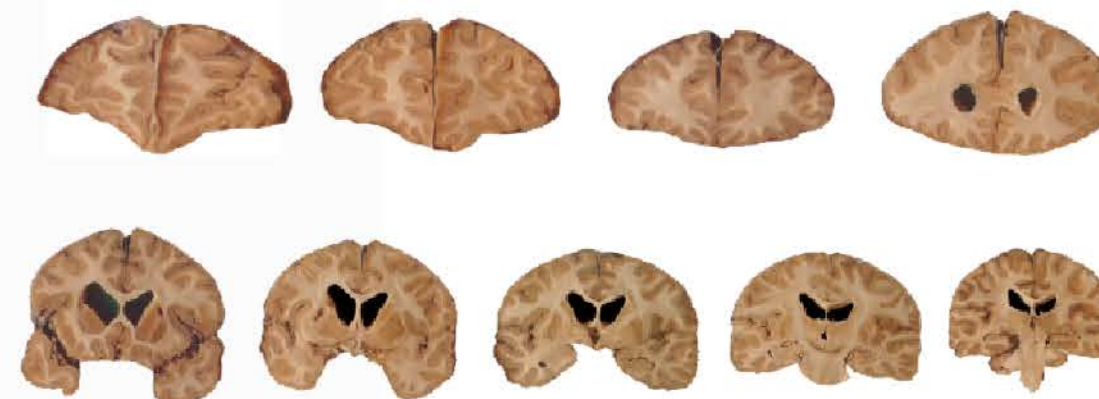
SN-011

Horizontal section of the whole brain

Whole brain, horizontal section, three parts, dissected to show the inner structures of the brain.

SN-013
Coronal section of the brain

Coronal section, dissected to show the inner structures of the brain.



SN-014

Horizontal section of the whole brain

Whole brain, coronal section, about 9-10 slices, 15mm.



SN-015
Cerebral dura mater and sinuses of dura mater
Dissected to show the cerebral falx, tentorium of cerebellum, superior & inferior sagittal sinus and dependency structures of the brain.



SN-016
Cerebral dura mater



SN-017
The pyramidal tract



SN-018
The corpus callosum



SN-019
The brain stem
Dissected to show the medulla oblongata, midbrain, rhomboid and 10 pairs of cranial nerves roots.



SN-020
The cerebellum
Dissected to show the cerebellar hemisphere, vermis and dependency structures.



SN-021
Median sagittal section of the cerebellum
Unilateral, median sagittal section, dissected to show the inner structures of the cerebellum.



SN-023
Peduncles of the cerebellum and the lateral lemniscus
Dissected to show the superior cerebellar peduncle, middle cerebellar, inferior cerebellar peduncle.



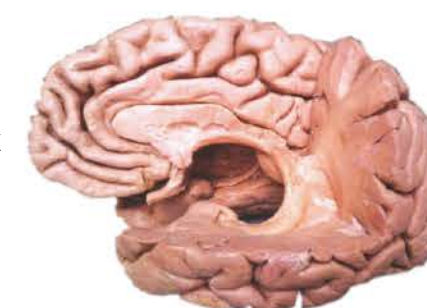
SN-024
Superior cerebellar peduncle and the dentate nucleus
Dissected to show the vermis, dentate nucleus and dependency structures

SN-025
The insular lobe (The insula)
Unilateral, dissected to show the gyrus longus insulae, gyri breves insulae, sulcus centralis insulae and dependency structures

SN-026
Hippocampus and fornix
Dissected to show the corpus callosum, body of fornix, dentate gyrus and dependency structures.



SN-022
Horizontal sagittal section of the cerebellum
Unilateral, horizontal section, dissected to show the inner structures of the cerebellum





SN-027

The hippocampal formation

Dissected to show the lateral ventricle and hippocampal formation



SN-028

The lateral ventricles

Dissected to show the anterior horn, inferior horn and posterior horn.



SN-029

The cerebral hemisphere

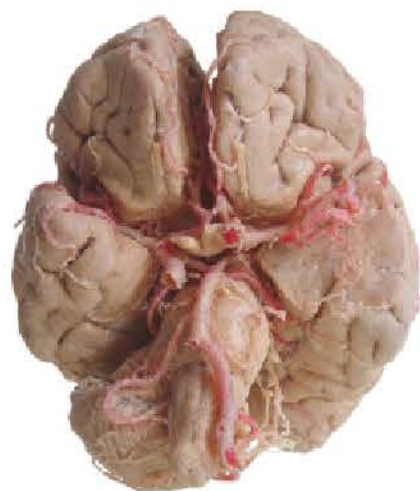
Unilateral, lateral surface to show the dependency structures of cerebral hemisphere.



SN-030

The association fibers of cerebral hemisphere

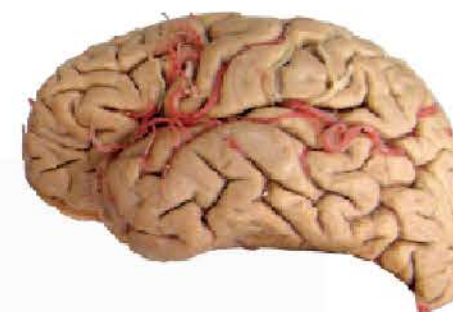
Unilateral, dissected to show the cerebral arcuate fibers, superior longitudinal fasciculus inferior longitudinal fasciculus and uncinate fasciculus, etc.



SN-031

Arteries at the base of the brain

Dissected to show the basilar artery, internal carotid artery and the mains branches.



Lateral surface

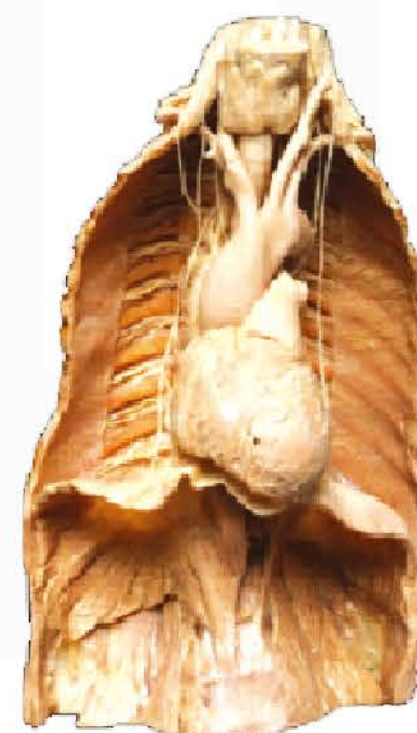


Medial surface

SN-032

Arteries of the cerebral hemisphere

Unilateral, dissected to show the anterior cerebral artery, middle cerebral artery, anterior choroid artery, posterior communicating artery and the main branches.



SN-034

The phrenic nerve

Dissected to show the line and main branches of phrenic nerve.



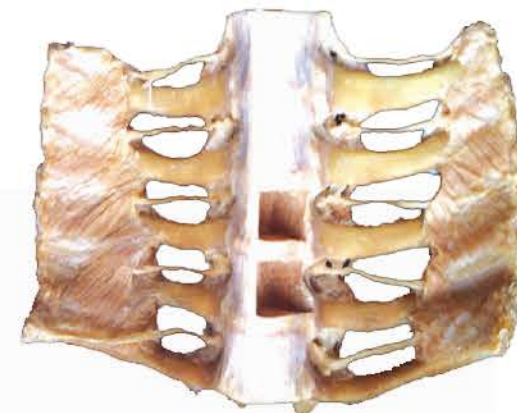
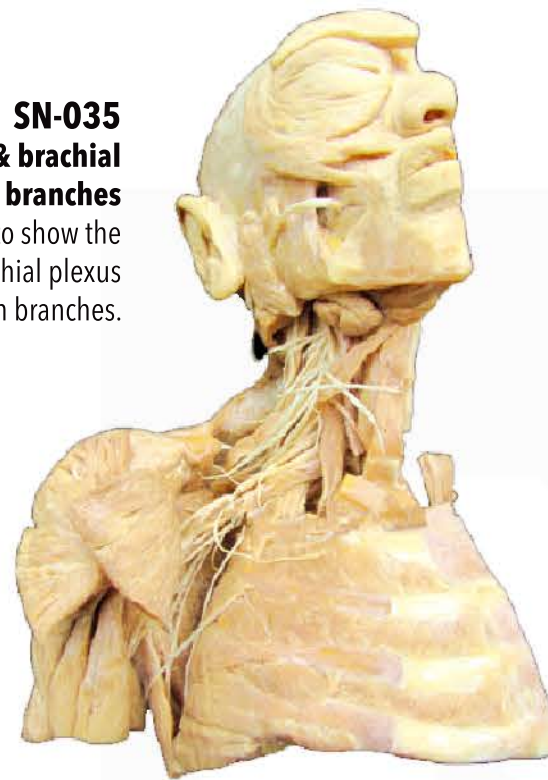
SN-033

Superficial nerves of head and neck

Unilateral, dissected to show the superficial nerves of head and cervical plexus cutaneous branches.

SN-035
The cervical plexus & brachial plexus and branches

Unilateral, dissected to show the cervical plexus & brachial plexus and the main branches.



SN-038
The line and branches of intercostal nerves

Dissected to show the branches of thoracic nerves in the intercostal.

SN-039
The lumbar plexus & sacral plexus and branches

Dissected to show the lumbar plexus & sacral plexus and the main branches.



SN-036
The nerves of upper limb

Unilateral, dissected to show the main nerves of upper limb.



SN-037
The nerves of hand

Unilateral, dissected to show the main nerves of hand.



SN-040
The nerves of lower limb

Unilateral, dissected to show the main nerves of lower limb.



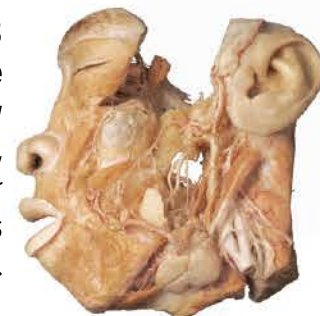
SN-041
Nerves of the foot

Dissected to show the nerves of the foot.





SN-042
Nerves of the orbit
Dissected to show the nerves of the orbit.



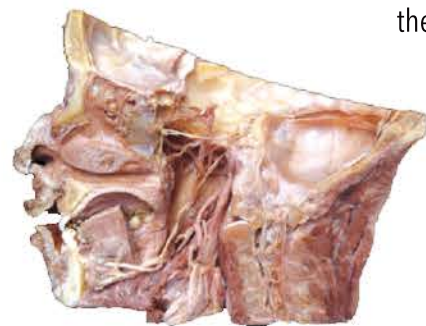
SN-043
The trigeminal nerve
Unilateral, dissected to show the ophthalmic nerve, maxillary nerve, mandibular nerve and the main branches of nerves.



SN-044
The mandibular nerve
Unilateral, dissected to show the auriculotemporal nerve, buccal nerve, lingual nerve, inferior alveolar nerve, masseteric nerve and the main branches of nerves.



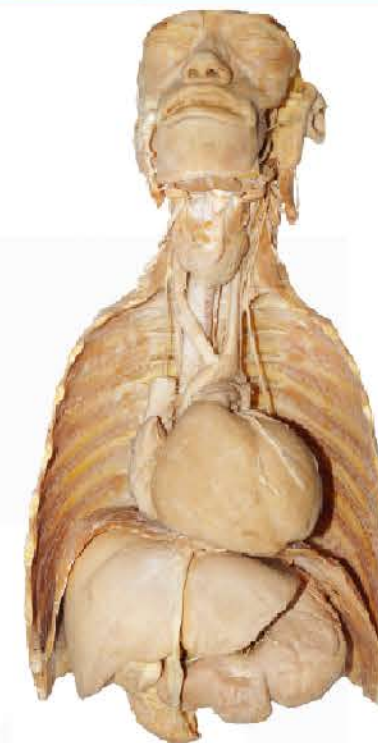
SN-045
Nerves of the face
Unilateral, dissected to show the distribution of the facial nerve in the face.



SN-046
The chorda tympani, pterygopalatine ganglion and otic ganglion
Unilateral, dissected to show the branches of facial nerve within the domain.



SN-047
The inlet and exit points of the 12 pairs of cranial nerve
Unilateral, dissected to show the main branches of nerves.



SN-048
The glossopharyngeal nerve, vagus nerve and accessory nerve
Dissected to show the line and distribution of the glossopharyngeal nerve, vagus nerve and accessory nerve.



SN-049
The sympathetic trunk and sympathetic ganglion
Dissected to show the sympathetic trunk and sympathetic ganglion in the thorax and posterior wall of abdomen.

También te puede interesar

Superficial veins of the brain

Unilateral, dissected to show the veins of the lateral surface of cerebral hemisphere.

Deep veins of the brain

Dissected to show the deep veins of the cerebral.

Deep veins of the brain

In vitro, dissected to show the superior laryngeal nerve, internal laryngeal nerve and external laryngeal nerve.

Nerves of the perineum in men

Dissected to show the nerves of male perineum.

Nerves of the perineum in women

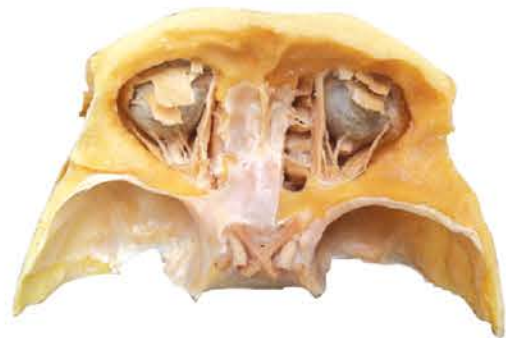
Dissected to show the nerves of female perineum.

The glossopharyngeal nerve and hypoglossal nerve

Unilateral, dissected to show the main branches of nerves.

The plexus of visceral nerve within abdominal cavity

Dissected to show the celiac plexus, abdominal aortic plexus and the main branches within abdominal cavity.



EC-001
Orbital wall, eyeball, optic nerve and optic decussation
Dissected to show the eyeball, optic nerve and optic decussation, etc.



EC-002
Sagittal section of orbital cavity
Sagittal section, dissected to show the internal structures of orbital cavity.



EC-003
Blood vessels of eyelids
Dissected to show the blood vessels of supraorbital, blood vessels of supratrochlea, blood vessels of angular, infraorbital artery, transverse facial artery, blood vessels of superficial temporal and lacrimal artery, etc.



EC-006
The extraocular muscles
Dissected to show the eyeball and muscles of around.



EC-007
Orbit and its contents
Dissected to show eyeball, extraocular muscles, optic nerve and lacrimal gland, etc.



EC-008
Innervation of the orbit and eyeball
Dissected to show the lacrimal nerve, nasociliary nerve and frontal nerve.



EC-004
The tarsus
In vitro, dissected to show the layers of the eyelids. Unilateral.



EC-005
The lacrimal apparatus
Dissected to show the lacrimal gland and lacrimal passage. Unilateral.

EC-009
The vestibulocochlear organ
Dissected to show the vestibular apparatus and auditory apparatus.





EC-010
Lateral wall of the tympanic cavity
Dissected to show the tympanic membrane and auditory tube, etc.



EC-011
Medial wall of the tympanic cavity
Dissected to show the promontory, fenestra vestibuli and fenestra cochleae, etc.

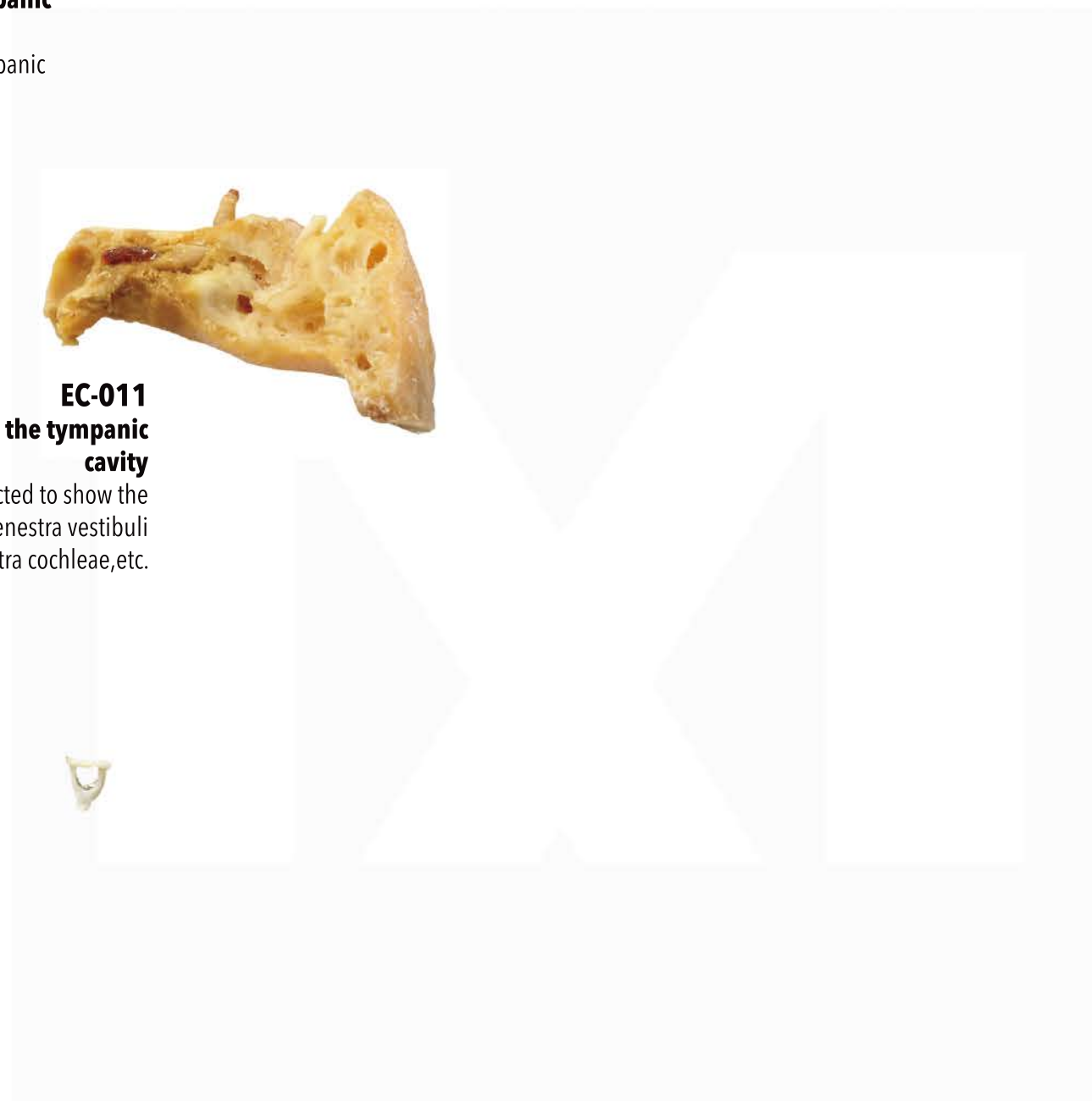


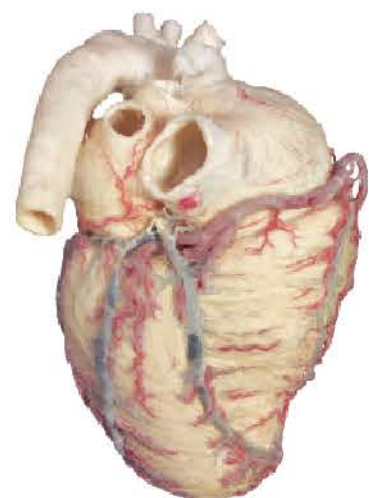
EC-012
The auditory ossicles
In vitro, dissected to show the malleus, incus and stapes.

También te puede interesar:

The middle ear

Dissected to show the tympanic membrane and ossicular chain, etc.





OC-002
External features and blood vessels of the heart
In vitro, heart with the vessels attached dissected to show the external features.

OC-001
The valves and fibrous rings of heart
Base of the ventricles, dissected to show the atrioventricular valve.



OC-004
Heart cavity contents
Dissected to show the interior of heart cavity with the windows.

OC-003
The cardiac muscles of heart
Dissected to show the course of the cardiac muscles.



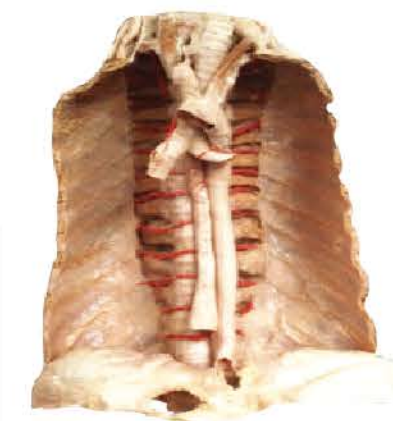
OC-005
Conduction system of heart



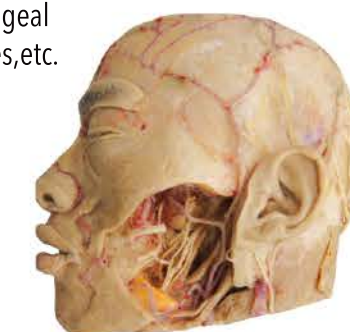
OC-006
The pericardium



OC-007
Thoracic aorta and its branches
Dissected to show the posterior intercostal artery, subcostal artery, bronchial branches, esophageal branches and pericardial branches, etc.



OC-008
The Inner structure of heart
Sectioned in half, dissected to show the inner structure of heart.

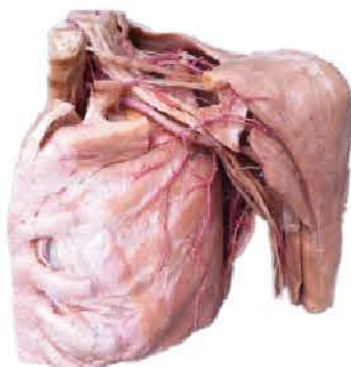


OC-010
Facial artery and maxillary artery and its branches
Unilateral.

OC-009
Abdominal aorta and its branches
Dissected to show the inferior phrenic artery, lumbar arteries and celiac trunk, etc.

OC-011
External carotid artery and its branches
Unilateral, dissected to show the maxillary artery, superficial temporal artery, facial artery, lingual artery, middle meningeal artery, posterior auricular artery and branches of them.





OC-012
Subclavian artery and its branches
Unilateral, dissected to show the vertebral artery, internal thoracic artery, thyrocervical trunk, costocervical trunk and the main branches of them.



OC-013
Axillary artery and its branches
Unilateral, dissected to show the thoracoacromial artery, lateral thoracic artery, subscapular artery, posterior humeral circumflex artery and the branches of them.



OC-014
Antebrachial artery
Unilateral, dissected to show the radial artery, ulnar artery and main branches, etc.



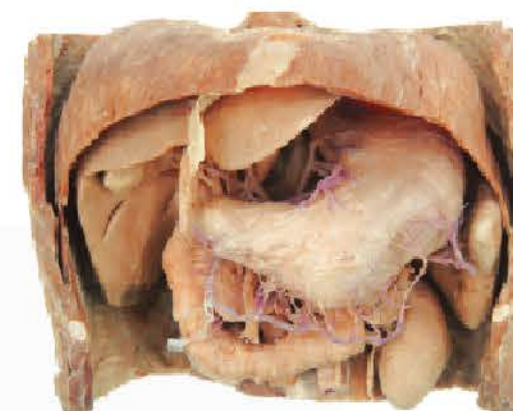
OC-015
Arteries of upper limb and its branches
Unilateral, dissected to show the brachial artery, radial artery, ulnar artery and main branches, etc.



OC-016
Superficial arteries of hand
Unilateral, dissected to show the superficial palmar arch and its branches.



OC-017
Superficial arteries of hand
Unilateral, dissected to show the superficial palmar arch and its branches.



OC-018
Celiac trunk and its branches
In vitro, dissected to show the left gastric artery, common hepatic artery, splenic artery and the main branches.

OC-019
Superior mesenteric artery and its branches
In situ, dissected to show the inferior pancreaticoduodenal artery, jejunal arteries, ileal arteries, ileocolic artery, right colic artery, middle colic artery and the main branches.



OC-020
Inferior mesenteric artery and its branches
In situ, dissected to show the left colic artery, sigmoid arteries, superior rectal artery and the main branches.





OC-021
Ilecolic artery and its branches

In vitro, dissected to show the appendicular artery and the main branches.

OC-022
Arteries of male pelvic cavity

Unilateral, dissected to show the common iliac artery and the main branches.

OC-023
Arteries of female pelvic cavity

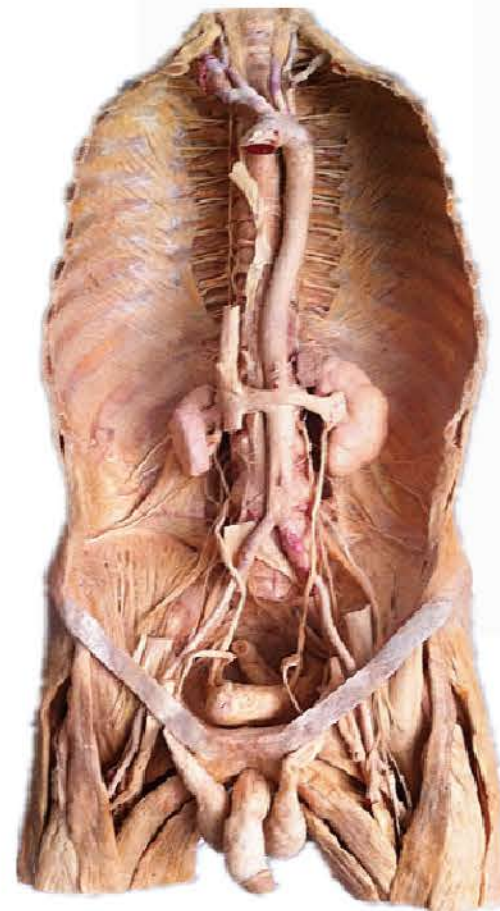
Unilateral, dissected to show the common iliac artery and the main branches.

OC-024
Perineal artery of male

Dissected to show the anal artery, artery of penis, perineal artery and the main branches.

OC-025
Arteries of posterior wall of trunk

In situ, dissected to show the thoracic aorta, abdominal aorta and the main branches.

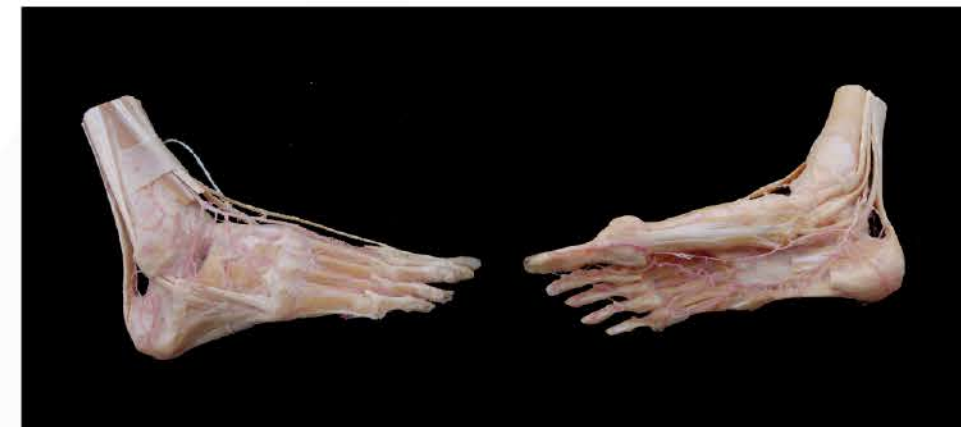


OC-026
Arteries of lower limb and its branches

Unilateral, removed parts of muscles, dissected to show the arteries of lower limb.

OC-027
Arteries of leg

Dissected to show the popliteal artery, anterior tibial artery, posterior tibial artery and the main branches.



superior aspect

Inferior aspect

OC-028
Arteries of foot and its branches

Unilateral, dissected to show the dorsal artery of foot, plantar artery and the main branches.



OC-029
Superficial dissection of plantar artery

Unilateral, dissected to show the plantar aponeurosis, medial plantar artery, lateral plantar artery, nerves and the main branches.



OC-030
Deep dissection of plantar artery

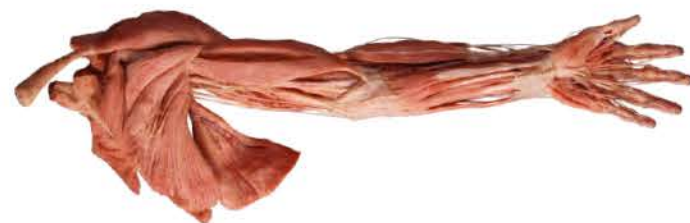
Unilateral, dissected to show the deep muscles of plantar, medial plantar artery, lateral plantar artery, nerves and the main branches.



OC-031
The venous valve
In pairs, the half moon.



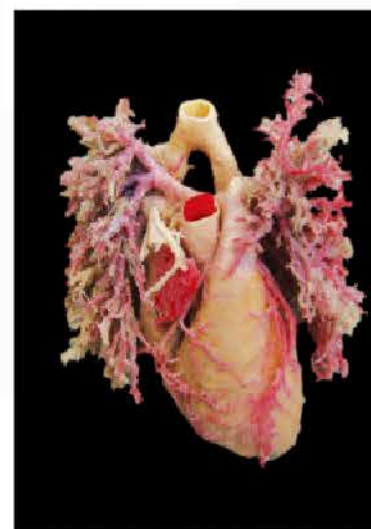
OC-032
Dorsal superficial veins of hand
Unilateral, dissected to show the dorsal venous rete of hand.



OC-034
Superficial veins of upper limb
Unilateral, dissected to show the cephalic vein, basilic vein, median cubital vein and median antebrachial vein.



OC-033
Veins of head and neck
Unilateral, dissected to show the facial vein, retromandibular vein, external jugular vein, anterior jugular vein, internal jugular vein and subclavian vein, etc.



OC-035
Heart, blood vessels of pulmonary and bronchial tree



OC-036
Superior vena cava and its branches
In vitro, dissected to show the left & right brachiocephalic vein and azygos vein, etc.



OC-038
Normal artery
A section of the aorta, dissected to show the inner wall.



OC-037
Veins of posterior wall of trunk
In situ, dissected to show the superior & inferior vena cava and thoracic duct.

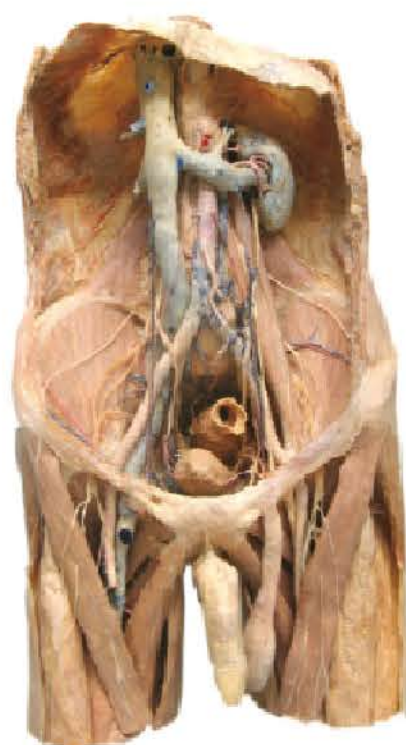


OC-039
Superficial veins of lower limb
Unilateral, dissected to show the great saphenous vein, small saphenous vein and the main branches of them.



OC-040
The arches of intestinal artery

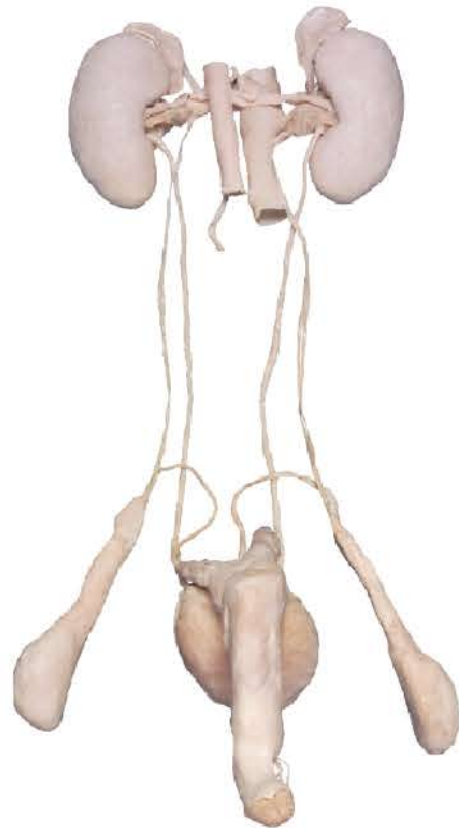
OC-041
Dorsal superficial veins of foot
Unilateral, dissected to show the dorsal venous rete of foot.



OC-042
Inferior vena cava and its branches
In situ, dissected to show the inferior phrenic vein, lumbar vein, renal vein and hepatic vein, etc.



OC-043
Hepatic portal and its branches
In situ, dissected to show the superior & inferior mesenteric vein, left & right gastric vein, splenic vein, prepyloric vein and gallbladder vein, etc.



PT-001
General arrangement of the male urogenital system
In vitro, dissected to show the urinary and genital organs of male.

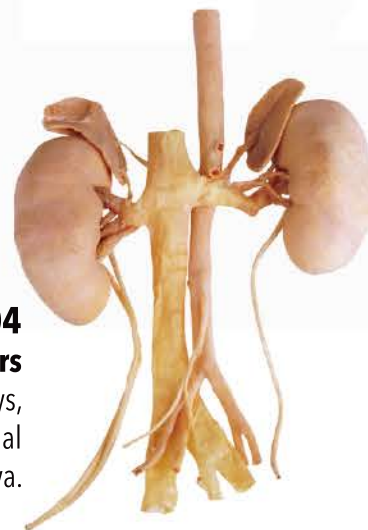


PT-002
General arrangement of the female urogenital system
In vitro, dissected to show the urinary and genital organs of female.



PT-003
The front view of the bladder
In vitro, dissected to show the trigone of bladder.

PT-004
The kidneys and ureters
In vitro, double kidneys, dissected to show the abdominal aorta and inferior vena cava.



PT-005
Shape of the kidney
In vitro, dissected to show the blood vessel of kidney and ureter, unilateral.



PT-006
The double kidneys
In vitro, dissected to show the blood vessel of kidney and ureter, unilateral.

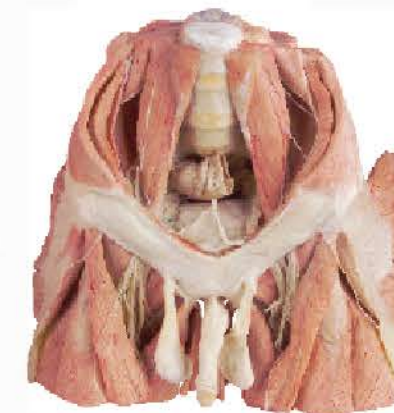


PT-007
The kidney (coronal section)
Coronal section, dissected to show the structures of kidney.

PT-008
Median sagittal section of male pelvic cavity
Unilateral, dissected to show the structures in the male pelvic cavity.



PT-009
Median sagittal section of female pelvic cavity
Unilateral, dissected to show the structures in the female pelvic cavity.



PT-010
The superior view of male pelvic cavity
The whole pelvis cavity, dissected to show the structures in the male pelvic cavity.

PT-011
The superior view of female pelvic cavity
The whole pelvis cavity, dissected to show the structures in the female pelvic cavity.





PT-012
The testis and epididymis
In vitro, dissected to show the three layers overlay structures of the testis.



PT-013
The male genital organs
In vitro, dissected to show the whole male reproductive organ.



PT-014
The cavernous body of penis
In vitro, dissected to show the crus penis and urethral orifice, etc.



PT-015
The transverse section of penis
Dissected to show transverse section through the body of the penis.



PT-016
Female internal genital organs



PT-017
Female pudendum



PT-018
The ligaments of uterus
In vitro, dissected to show the ligaments of uterus.



PT-019
The thoracic wall of female
In vitro, dissected to show the mammary glands.



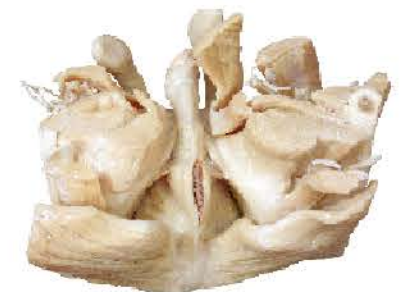
PT-020
The thoracic wall and abdominal wall of female
In vitro, dissected to show the mammary glands.



PT-021
The mamma
Unilateral, removed the skin, dissected to show the lobules of the mammary gland, septum, and adipose tissue of the breast.



PT-022
Sagittal section of the mamma
Dissected to show the sagittal section of the mamma.

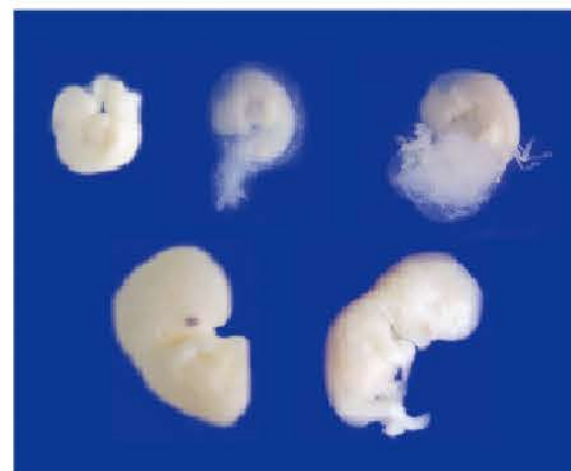
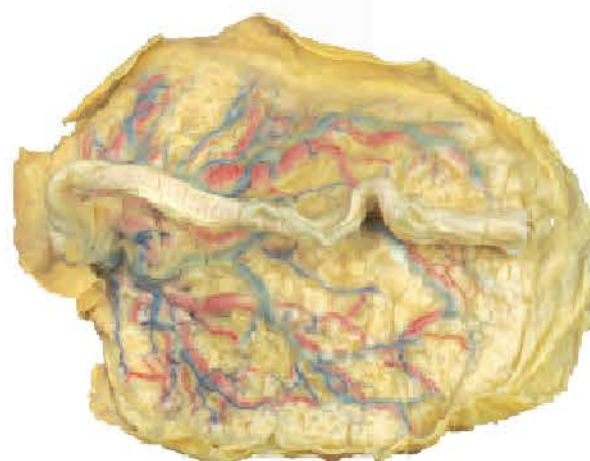


PT-023
Muscles of the male perineum
Dissected to show the muscles of the male perineum, without blood vessels and nerves.



PT-024
Muscles of the male perineum
Dissected to show the muscles of the female perineum, without blood vessels and nerves.

PT-025
The placenta
Vessels supplying coloured "arteries red & veins blue", with the umbilical cord.



PT-026
The placenta(suit)
5 different period (from 4 to 8 weeks).



PT-027
The Fetus(suit)
4 different period.

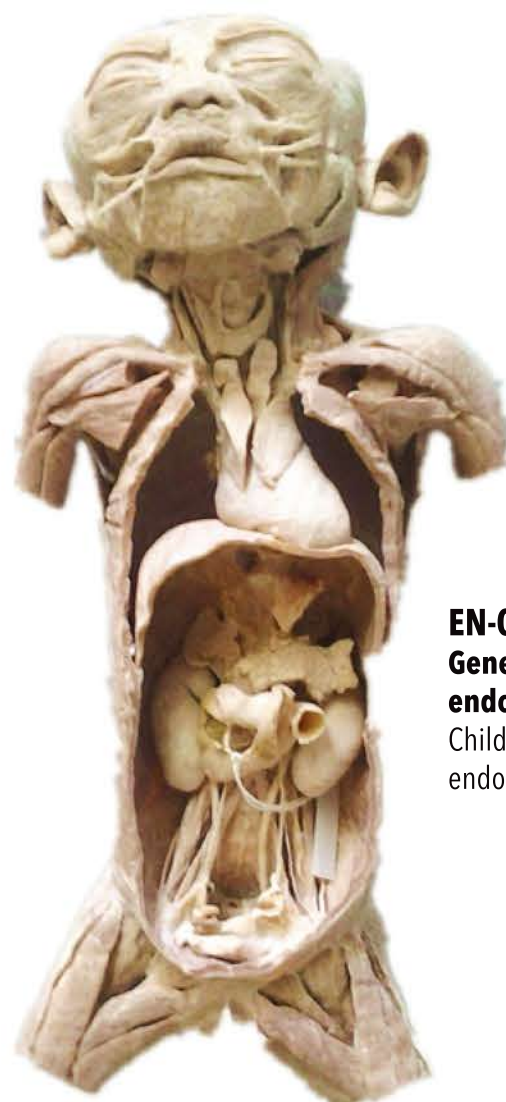


PT-028
The transparent fetus(suit)
5 different period. Transparent specimens.

También te puede interesar:

The seminal vesicle and prostate gland

In vitro, dissected to show the seminal vesicle, ampulla ductus deferentis and ampulla prostate gland of urethra.



EN-001
General arrangement of endocrine system
Child, dissected to show the whole endocrine glands in situ.



EN-002
The brain stem, pituitary gland and pineal body

EN-003
The thyroid gland
In vitro.



EN-004
The thyroid gland and parathyroid gland
With larynx.



EN-007
The thymus
In vitro, pairs.



EN-005
The suprarenal gland
In vitro.



EN-006
The kidney and suprarenal gland
In situ to show the glands.



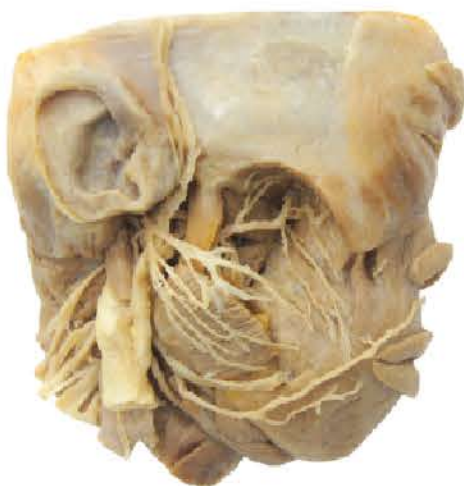
EN-008
The thymus
With heart.



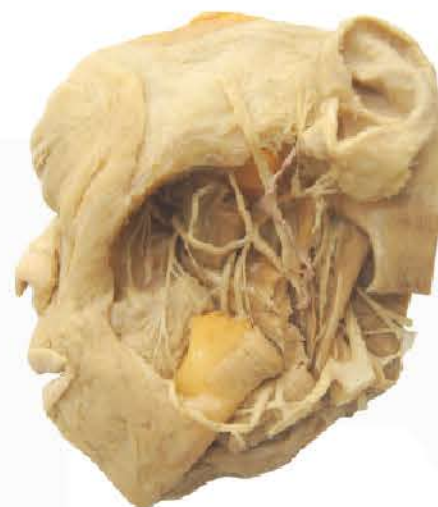
EN-009
The thymus
In vitro.



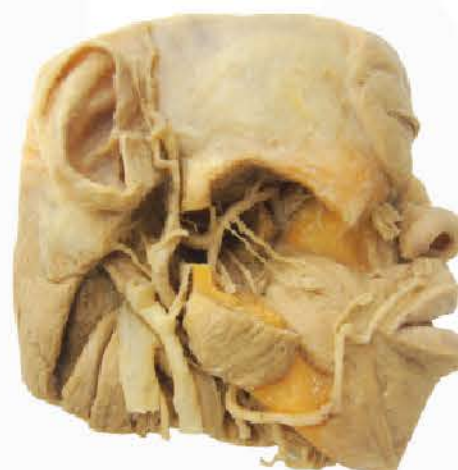
PC-001
Superficial structures of face
Unilateral, dissected to show the facial muscles, facial artery, facial vein, facial nerve and the main branches of them.



PC-003
Deep blood vessels and nerves of facial lateral aspect(superficial layer)
Unilateral, removed parts of mandible, dissected to show the internal carotid artery, carotid artery, facial nerve and maxillary artery.



PC-002
Deep structures of parotid gland
Unilateral, removed parts of mandible, dissected to show the deep blood vessels and nerves.



PC-004
Deep blood vessels and nerves of facial lateral aspect(deep layer)
Unilateral, removed parts of mandible, dissected to show the external carotid artery, maxillary artery and middle meningeal artery.



PC-005
Layers of calvaria
Unilateral, dissected to show the five layers of calvaria.



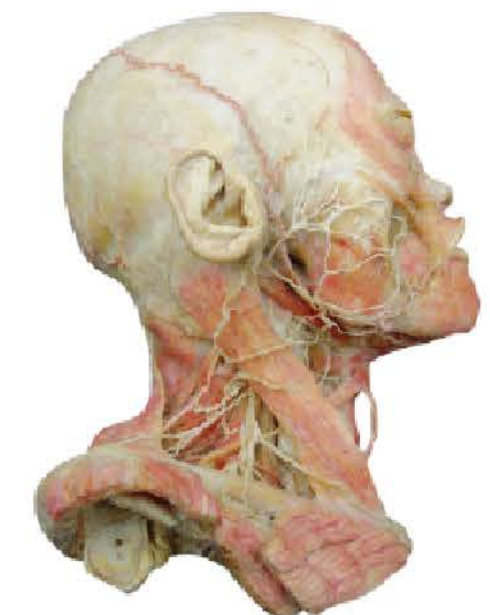
PC-006
The occipitofrontalis and blood vessels, nerves of calvaria
The whole calvaria, one side dissected to show the occipitofrontalis and epicranial, the other side to show the blood vessels and nerves of calvaria.



PC-007
The tentorium cerebelli and sinuses of dura mater
Horizontal incision, show the tentorium cerebelli, transverse sinus and sigmoid sinus.



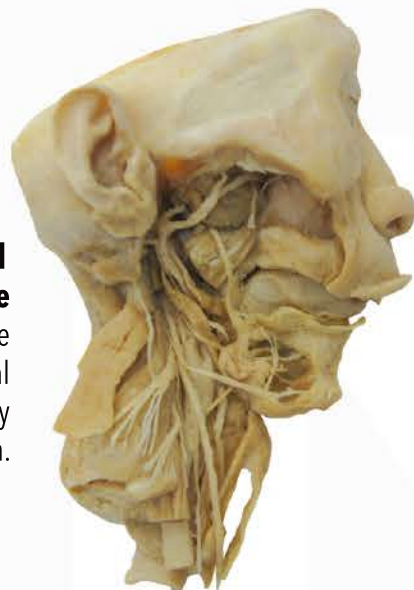
PC-008
Regions of neck
Unilateral, show the anterior cervical region and lateral cervical region.



PC-009
The superficial structures of neck
Unilateral, dissected to show the superficial blood vessels and nerves.



PC-010
The platysma and superficial structures of neck
Unilateral, dissected to show the platysma, superficial veins and nerves.



PC-011
The submandibular triangle
Unilateral, dissected to show the submandibular gland, facial artery, hypoglossal nerve, lingual artery and submandibular ganglion.



PC-012
The carotid triangle
Unilateral, dissected to show the internal jugular vein and its branches, common carotid artery and its branches, hypoglossal nerve, vagus nerve and its branches, accessory nerve.



PC-013
The anterior region of neck (superficial layer)
Dissected to show the muscles, blood vessels and nerves of superficial layer of neck.



PC-014
The anterior region of neck (deep layer)
Dissected to show the muscles, blood vessels and nerves of deep layer of neck.

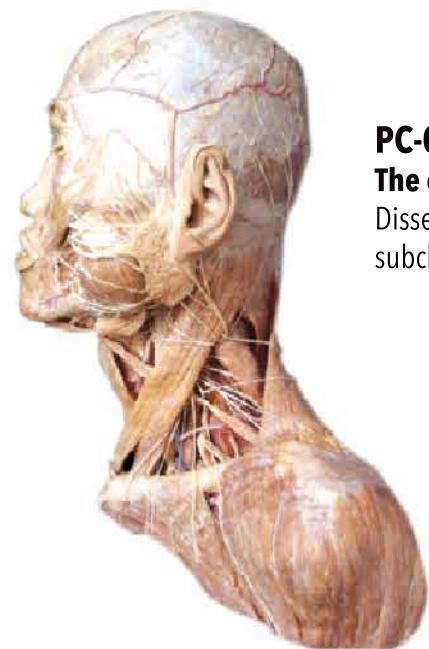


PC-015
The internal & external carotid artery and cranial nerve
Unilateral, show the relations of internal & external carotid artery and cranial nerve.

PC-016
The arteries of thyroid gland nerves of larynx
Dissected to show the superior & inferior thyroid artery, superior laryngeal nerve and recurrent laryngeal nerve.



PC-017
The veins of thyroid gland
Dissected to show the superior & middle & inferior thyroid vein.



PC-018

The occipital triangle

Dissected to show the subclavi-an vein, subclavian artery and brachial plexus.



PC-019

Dissection of head, neck , upper limb and thoracic cavity

Unilateral,superficial dissection to show the head,neck and upper limb,chest wall intacted.



PC-020

Anterolateral abdominal wall (deep layer)

Dissected to show the deep muscles blood vessels and nerves.



PC-021

Lesser omentum

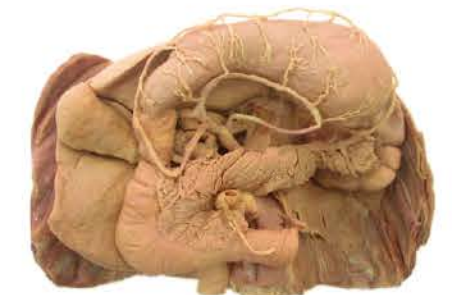
In situ to show the greater omentum and lesser omentum.



PC-022

Blood vessels of stomach

In situ,dissected to show the left & right gastric blood vessels,left & right gastroepiploic blood vessels,short gastric blood vessels,and so on.



PC-023

Relation of horizontal part of duodenum

In situ to show the position of duodenum and all around structures.



PC-024

Blood vessels of stomach

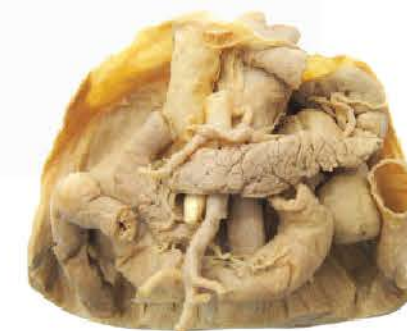
Opened the duodenum and pancreas, dissected to show the major & minor duodenal papilla and pancreatic duct.



PC-025

Porta hepatis and hepatic pedicle

The gallbladder intacted,dissected to show the structures of porta hepatis.



PC-026

Distribution and relation of pancreas

In situ to show the distribution and relation of pancreas.



PC-027
Arrangement of the peritoneum on the posterior abdominal wall
Dissected to show the internal structures and the position relation of the abdominal wall after.



PC-028
Structures of retroperitoneal space
Dissected to show the related structures.



PC-029
The adjacent organs of kidneys

PC-030
Muscles of pelvic diaphragm
Dissected to show the levator ani and coccygeus, etc.



PC-031
Male superficial perineal space structures
Dissected to show the superficial muscles, nerves and blood vessels.



PC-032
Male deep perineal space structures
Dissected to show the deep muscles, nerves and blood vessels.

PC-033
Female superficial perineal space structures
Dissected to show the superficial muscles, nerves and blood vessels.



PC-034
Female deep perineal space structures
Dissected to show the deep muscles, nerves and blood vessels.



PC-035
Layers of scrotum
Dissected to show the external spermatic fascia, cremaster muscle, internal spermatic fascia and tunica vaginalis of testis.





PC-036
Blood vessels and nerves of penis dorsal

Dissected to show the deep vein of penis, dorsal artery of penis and dorsal nerve of penis.



PC-037
Dissection of popliteal fossa

Dissected to show the tibial nerve, popliteal vein, popliteal artery and related structures.



PC-038
Dissection of axillary fossa

Dissection for the axillary contents, nerves and blood vessels.



PC-039
Axillary and breast lymph nodes

Dissected to show the lateral lymph nodes, pectoral lymph nodes, subscapular lymph nodes, central lymph nodes and apical lymph nodes.

También te puede interezar:

Tectorial membrane and posterior longitudinal ligament

Median sagittal section, show the tectorial membrane and posterior longitudinal ligament.

The veins of thyroid gland

Dissected to show the dependency structures.

The root of neck

Dissected to show the subclavian artery and brachial plexus.

Relations of scalenus anterior

Opened the clavicle and anterior neck muscles, dissected to show the nerves and blood vessels.

The vertebral artery triangle

Dissected to show the cupula pleura, vertebral artery, vertebral vein, thyrocervical trunk, inferior thyroid artery, cervical part of sympathetic trunk and cervicothoracic ganglion.

The occipital triangle

Dissected to show the accessory nerve, branches of cervical plexus and brachial plexus.

The thoracic duct and lymphatic ducts

Dissected to show the thoracic duct, dependency veins and lymphatic ducts.

Anteriolateral abdominal wall

Dissected to show the aponeurosis of obliquus externus abdominis and superficial muscles.

Superficial structures of inguinal canal

Dissected to show the obliquus internus abdominis, superficial inguinal ring and superficial nerves and blood vessels.

Middle structures of inguinal canal

Dissected to show the rectus abdominis and middle nerves and blood vessels.

Middle structures of inguinal canal

Dissected to show the transversus abdominis and deep nerves and blood vessels, opened inguinal canal.

Deep muscles of the gluteal region

Dissected to show the piriformis, gemellus superior, gemellus inferior, obturator internus and obturator externus.

Arteries and nerves of the gluteal region

Removed gluteus maximus, dissected to show the arteries and nerves.

Vagus nerve of stomach

Dissected to show the anterior & posterior vagal trunk and branches.

Arteries of duodenum

Dissected to show the dependency arteries of duodenum.

Veins of duodenum

Dissected to show the dependency veins of duodenum.

Duodenum in situ

Dissected to show the position of duodenum.

Gallbladder and extrahepatic biliary passages

Opened the gallbladder, dissected to show the hepatic duct, common hepatic duct and common bile duct.

Gallbladder and pancreatic ducts

Dissected to show the pancreas, duodenum and extrahepatic biliary passages.

Arteries of ileocecus

Dissected to show the vermiform appendix and related arteries.

Muscles of pelvic wall

Unilateral, dissected to show the obturator internus and piriformis.



CP-001
General arrangement of the digestive system

Median sagittal section of head, dissected to show the nasal cavity, oral cavity and larynx; reserved a lung on one side, bronchial tree on the other side.



CP-005
Muscles of the larynx
In vitro, posterior aspect, dissected to show the muscles of the larynx.



CP-006
The cavity of the larynx
In vitro, posterior aspect, dissected to show the cavity of the larynx.

Anterior aspect

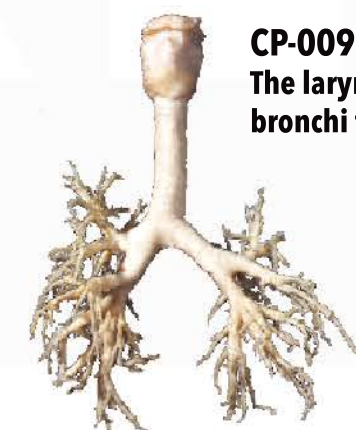
Posterior aspect



CP-007
The cartilages and ligaments of larynx
In vitro, dissected to show the cartilages and ligaments of the larynx.



CP-008
The larynx, trachea and bronchi



CP-009
The larynx, trachea and bronchi tree



CP-010
The bronchi tree



CP-002
The shape of larynx
In vitro, dissected to show the whole shape of the larynx.



CP-003
The larynx (sagittal section)
In vitro, median sagittal section, dissected to show a side of laryngeal cavity.



CP-004
Opening of the paranasal sinuses
Parts of the conchae have been removed to show the openings of paranasal sinuses and nasolacrimal canal.



CP-011
The tongue and larynx



CP-012
The tongue, larynx, thyroid and bronchi



CP-013
The double lungs
In vitro, without the heart.



CP-014
The double lungs and heart
In vitro, with the heart.



CP-015
The lung and bronchial tree
In vitro, dissected to show the single lung on one side, dissected to show the bronchial tree on other side.



CP-016
The left lung



CP-017
The right lung



CP-018
The root of lung
Single lung, medial aspect of lung, dissected to show the hilus of lung.



CP-019
The segmental of bronchi
Double lungs, dissected to show the bronchopulmonary segments



CP-020
The mediastinum
In vitro, dissected to show the arrangement of organs, nerves and blood vessel in the mediastinum.



Smoking lungs



Non smoking lungs

CP-021
The smoking lungs and non-smoking lungs

También te puede interesar

The larynx(coronal section)
In vitro, coronal section, dissected to show the laryngeal cavity.



SD-001
General arrangement of the digestive system
The whole digestive tract, including the digestive tube and digestive glands.



SD-002
The whole viscera
In vitro. Dissected to show the whole viscera.



SD-003
The whole viscera
In situ. Dissected to show the whole viscera.



SD-004
The oral cavity and the isthmus of fauces
Dissected to show the oral vestibule and the oral cavity proper.



SD-006
The deciduous teeth
Dissected to show the incisors, canine teeth and molars, in situ.



SD-008
The permanent teeth
Dissected to show the incisors, canine teeth, molars and premolars, in situ.



SD-005
The tongue
Dissected to show the body of tongue, root of tongue and lingual mucous membrane, in vitro.



SD-007
The tongue (sagittal section)
Sagittal section, dissected to show the muscles of tongue.



SD-009
The major salivary glands
Unilateral. Dissected to show the parotid gland, submandibular gland and sublingual gland.



SD-010
Median sagittal section of the head and neck
Median sagittal section, dissected to show the lateral wall of nasal cavity, oral cavity, larynx, trachea, etc.



SD-012
The muscles of pharynx
Dissected to show the posterior aspect of the pharyngeal muscles, in situ.



SD-014
The mucous membrane of the stomach
In vitro, cut to show the gastric membrane structures, unilateral.

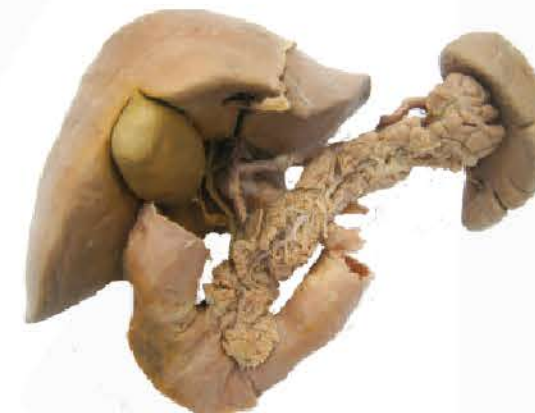
SD-011
The cavity of pharynx
Open the pharynx, dissected to show the internal structures, in situ.



SD-013
The stomach
In vitro, dissected to show the shape of stomach.



SD-015
The muscle coat of the stomach
In vitro, dissected to show the muscles of stomach.



SD-017
Biliary passage, duodenum and pancreas
In vitro, dissected to show the organs.



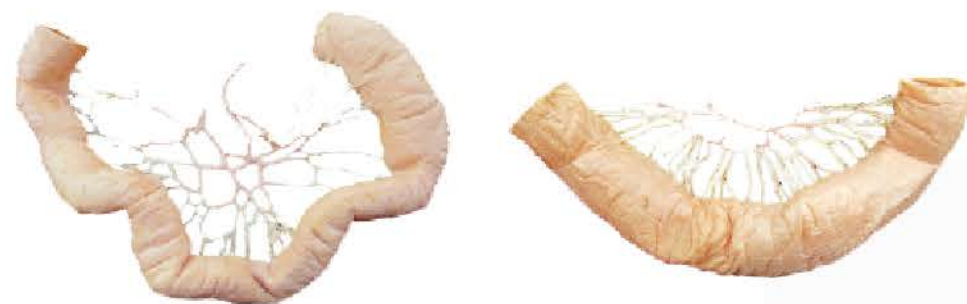
SD-019
The colon
Dissected to show the colic bands, haustra of colon and epiploic appendices, in vitro.

SD-016
The stomach wall window
In vitro, dissected to show the muscles of stomach wall with the window.



SD-018
The omentum majus
In vitro, with a segment of the intestinal duct.





SD-020
Comparison of jejunum and ileum
In vitro, two specimens dissected to show the features of jejunum and ileum.



SD-021
The small intestinal mucosa
In vitro, dissected to show the the intestinal wall structure with the window.



SD-022
Cecum and vermiform appendix
In vitro. A longitudinal incision, dissected to show the ileocecal valve and ostium appendicis vermiformis.



SD-023
Rectum and anal canal
In vitro, dissected to show the ampulla of rectum, anal sinuses, anal valves and anal pecten.



SD-025
The liver segments
In vitro, dissected to show the segmentation of the liver.



SD-026
The pancreas
In vitro, dissected to show the pancreatic duct.



SD-027
Liver, pancreas, spleen, stomach and duodenum
In vitro, dissected to show the organs.



superior aspect



inferior aspect

SD-024
The liver
In vitro, dissected to show the shape and ligaments.



SD-028
Liver, pancreas, spleen, stomach and duodenum
In vitro, dissected to show the organs.



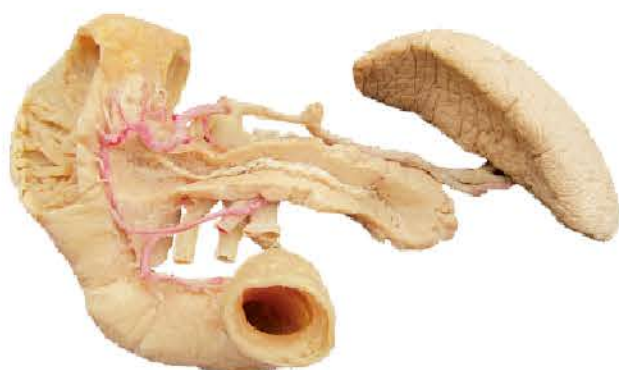
SD-029

Liver, pancreas, spleen, stomach and duodenum

In situ, dissected to show the the relevant organs and position relationship.

SD-030
Liver, pancreas, spleen, stomach duodenum and kidneys

In situ, dissected to show the the relevant organs and position relationship



SD-031

Pancreas, spleen and duodenum

In vitro, dissected to show the organs.



SD-032

The spleen

In vitro, dissected to show the shape and hilum of spleen.

Tambien te pueden interesar:

The esophagus

Dissected to show the position of the esophagus, in situ.

The esophagus

Dissected to show the three stenosis of esophagus, in vitro.



HC-001
The separated skull



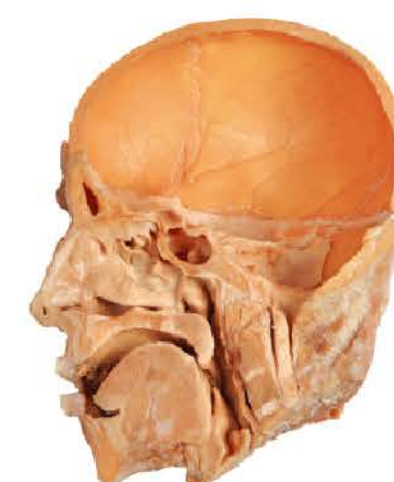
HC-003
The temporomandibular joint specimen

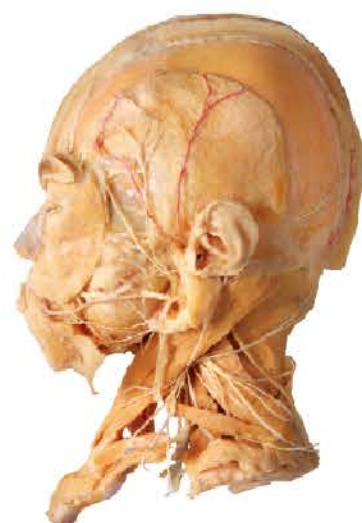


HC-002
Removed the roof of skull and teeth specimen



HC-004
The masticatory muscle, opening of the paranasal sinuses and extraocular muscles specimen





HC-005
The superficial structures of head and face

HC-007
Orbital space and buccal space and inner surface view of trigeminal nerve specimen



HC-006
The temporomandibular joint specimen

HC-008
The deep arteries and nerves of facial and neck specimen



HC-008
The regiones temporalis and deep
structures of neck specimen



HC-011
The trigeminal nerve specimen



HC-010
Horizontal slice of flat bite plane
specimen



HC-012
The soft palate muscle specimen



MT-001
Articulated skeleton of the whole body
200 pieces of whole body are articulated together
(without six auditory ossicles).



MT-002
Disarticulated skeleton of the whole body
200 pieces of whole body are disarticulated
(without six auditory ossicles)



MT-003
Structure of long bone
The long bone is coronally cut to show
the bony substance and
medullary cavity.



MT-004
The skeleton of the thorax
Show the skeleton of the thorax.



MT-005
The whole cervical vertebrae
Show the 7 parts skeleton of the
cervical vertebrae.



MT-006
The atlas

MT-007
The Axis

MT-008
**The fourth
cervical vertebra**



MT-009
**The prominent
vertebra**

MT-010
**The thoracic
vertebra
(superior aspect)**

MT-011
**The lumbar
vertebra
(superior aspect)**



MT-012

The sacrum and coccyx

With coccyx. Show base of sacrum, apex of sacrum and anterior sacral foramina.



MT-013

The ribs.

MT-014

The sternum

Consists of manubrium sterni, body of sternum and xiphoid process three parts.



MT-015

The frontal bone

Consists of frontal squama, nasal part and orbital part three parts.

MT-016

Ethmoid bone

Consists of cribriform plate, perpendicular plate and ethmoidal labyrinth three parts.

MT-017

The inferior nasal concha



MT-018

The nasal bone

MT-019

The lacrimal bone

MT-020

The zygomatic bone



MT-021

The occipital bone

Like a spoon, show the foramen magnum.

MT-022

The sphenoid bone

Like a butterfly, show sphenoidal sinus, greater wing, lesser wing and pterygoid process.



MT-023

The temporal bone

Consists of squamous part, tympanic part and petrous part three parts.



MT-024

The parietal bone

In pairs, quadrilateral.



MT-025
The maxillae
Pairs. Show body of maxilla, frontal process, zygomatic process, alveolar process and palatine process.



MT-026
The mandible
Consists of body of mandible and ramus of mandible



MT-027
The palatine bones
Pairs. Show perpendicular plate and horizontal plate.



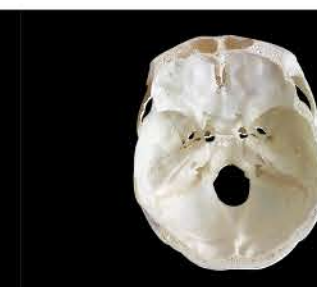
MT-028
The whole skull
Without the hyoid bone, show the whole structure of skull.



MT-029
The separated skull
The 23 bones are reassembled by stainless steel frame.



MT-030
The internal surface of calvaria
Show coronal suture, sagittal suture and lambdoid suture.



MT-031
Horizontal section of skull
Show the internal and external surfaces of the base of the skull.



MT-032
Median-sagittal section of skull
The zygomatic arch may be removed to show the pterygopalatine fossa.



MT-033
The fetal skull
Show the cranial fontanelles.



MT-035
The humerus



MT-036
The radius



MT-037
The ulna



MT-038
The scapula
Trigon flat bone. Show the coracoid process and acromion, act.



MT-039
The bones of hand
Show carpal bones, metacarpal bone and phalanges of fingers, altogether the 27 bones. Unilateral.



MT-040
The bip bone
(Adult)



MT-041
The bip bone
(Child)



MT-043
The tibia



MT-042
The Femur



MT-044
The fibula



MT-045
The patella



MT-046
The bones of foot



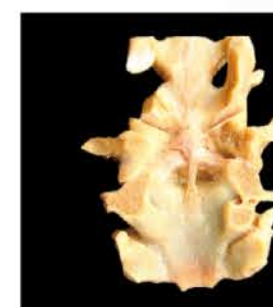
MT-047
Intervertebral joints
Show the intervertebral disc and all kinds of ligaments.



MT-048
Anterior longitudinal ligament
With a spine, show the ligament longitudinale anterior.



MT-049
Ligamentum Nuchae
Keeping part of the base of the skull. Showing a ligament joined external occipital protuberance and seventh cervical vertebra.



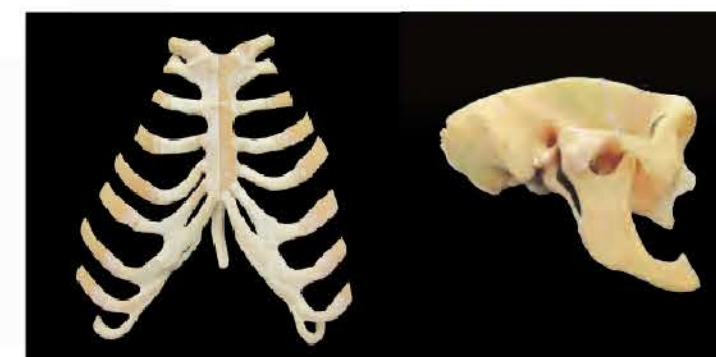
MT-050
The atlanto-occipital and atlanto-axial joints
(Posterior aspect)



MT-051
The vertebral column
The 24 vertebra, a sacrum and a coccyx junction formation.



MT-052
Costovertebral joints
(Superior aspect)



MT-053
Sternocostal joint and sternoclavicular joint



MT-054
The temporomandibular joint



MT-055
Joints of the upper limb
Show all the joints of upper limb.



MT-056
The shoulder joint
Show the whole articular capsule.



MT-057
The shoulder joint open
Open the articular capsule.



MT-058
The shoulder joint (coronal section)
Show the coronal section.



MT-059
The elbow joint
Show the whole articular capsule.

MT-061
The elbow joint (sagittal section)
Show the sagittal section.

MT-060
The elbow joint open
Open the articular capsule.

MT-062
Joints of the forearm
Show the interosseous membrane of forearm.





MT-063

Joints of the hand

The whole articular capsules show the joints of hand.

MT-064

**Wrist joints
(Coronary section)
(Dorsal aspect)**

A coronal section through the joint at the wrist.

MT-065

The wrist joint open

Open the mediocarpal joint dorsal aspect.



MT-066

Male Pelvic ligament

The whole male pelvic, dissected to show the ligaments of pelvic.



MT-067

Female pelvic ligaments

The whole female pelvic, dissected to show ligaments of pelvic.



MT-068

Male pelvic ligaments with hip joint

The whole male pelvic, dissected to show the ligaments of pelvic and hip joint.

MT-069

**The elbow joint
(sagittal section)**

The whole female pelvic, dissected to show the ligaments of pelvic and hip joint.

MT-070

**Male pelvic ligaments
(Sagittal section)**

A half male pelvic, sagittal section, dissected to show the ligaments of pelvic

MT-071

**Female pelvic ligaments
(Sagittal section)**

A half female pelvic, sagittal section, dissected to show the ligaments of pelvic.



MT-073

The hip joint

With half pelvis attached, the whole articular capsule.



MT-072

Joints of the lower limb

With half pelvis attached, dissected to show all the joints of lower limb.



MT-074
The hip joint
(Coronal section)
Coronal section, show
articular cavity and
ligaments.



MT-075
The hip joint open
Open the capsule to show
the ligament of head of
femur.



MT-076
The knee joint
Show all ligaments of the
knee joint



MT-077
The knee joint
(median sagittal section)
Median sagittal section, show
articular cavity and ligaments.



MT-078
The menisci and
cruciate ligaments
Show the menisci and
cruciate ligaments.



MT-080
Joints of the foot
Show joints and ligaments.



MT-081
Joints of the foot
(horizontal section)
Horizontal section, show
joints of the foot.



MT-079
Joints of the leg
Show the crural
interosseous membrane

MT-082
Superficial muscles of the head

A half of head, dissected to show superficial muscles of the head

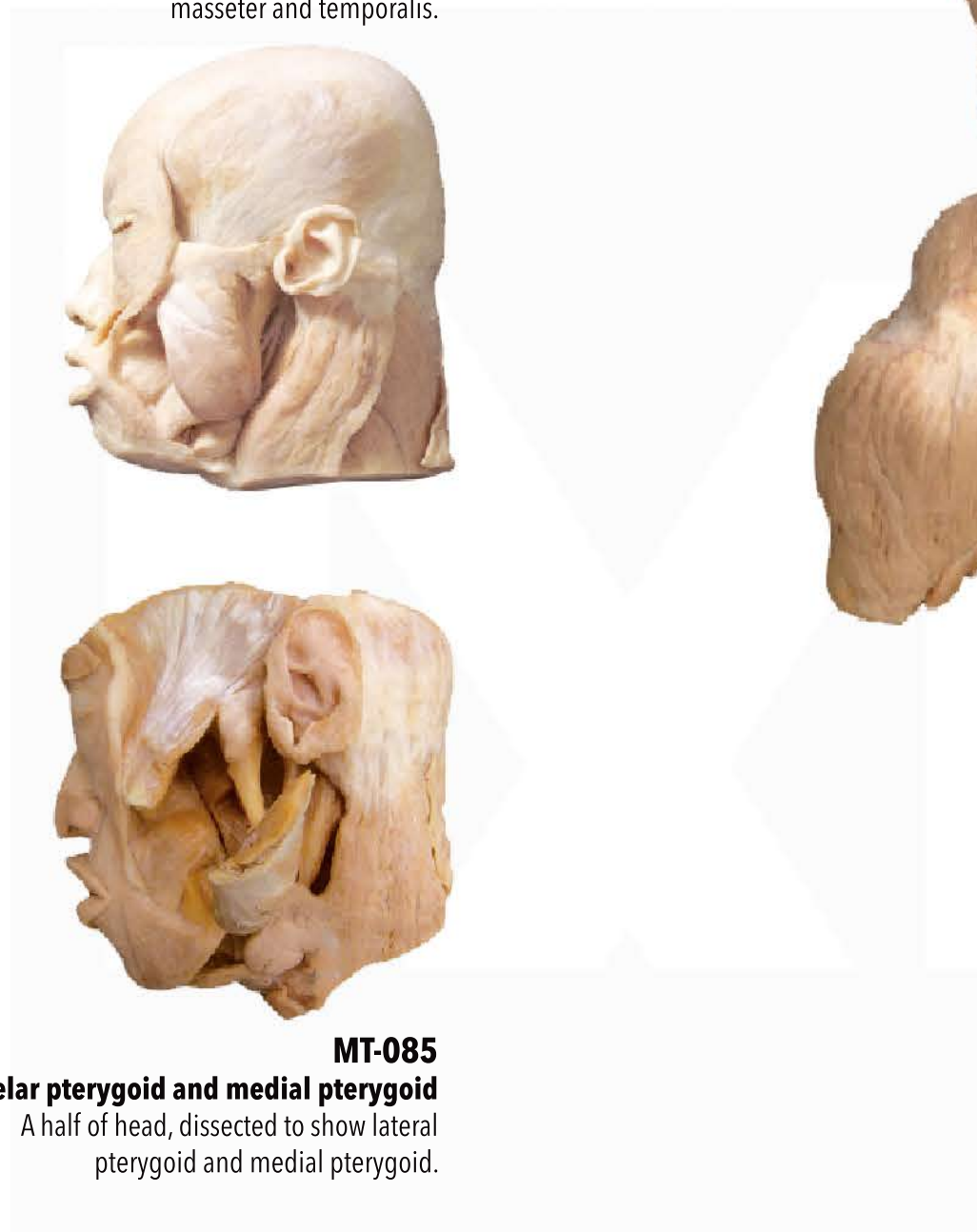


MT-083
Deep muscles of the head

A half of head, dissected to show deep muscles of the head.

MT-084
Masticatory muscle

A half of head, dissected to show the masseter and temporalis.



MT-085
Lateral pterygoid and medial pterygoid

A half of head, dissected to show lateral pterygoid and medial pterygoid.



MT-086
Deep muscles of the head and neck

A half of head, dissected to show the deep muscles of the head.

MT-087
Superficial muscles of the head and neck

A half of head, dissected to show the superficial muscles of the head



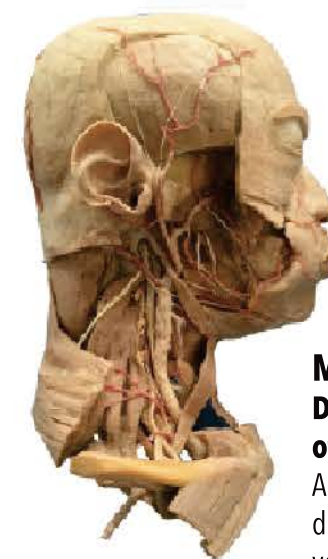
MT-088
Superficial comprehensive dissection of the head and neck

A half of head, dissected to show the superficial muscles, nerves and blood vessels.



MT-089
Deep comprehensive dissection of the head and neck

A half of head, dissected to show the deep muscles, nerves and blood vessels.





Anterior aspect



Posterior aspect

MT-090

Deep muscles of the neck

Dissected to show the deep muscles of the neck



Anterior aspect

Posterior aspect

MT-092

Muscles of the trunk (Child)

Child, with superficial muscles dissection on one side, deep muscles dissection on the other side.



MT-093

Diaphragm

Flat muscle, without vertebral column, without any organs.



MT-094

Diaphragm

With a length of vertebral column, without any organs.



MT-095

Dissection of the superior abdominal region

Dissected to show the dependency structures in situ.



Anterior aspect

Posterior aspect

MT-091

Muscles of the trunk (Adult)

Adult, with superficial muscles dissection on one side, deep muscles dissection on the other side.



MT-096

The diaphragm and the muscles of the posterior abdominal wall

Dissected to show the diaphragm and the muscles and nerves of the posterior abdominal wall.



MT-098

The sheath of retus abdominis

Transverse section through the anterior abdominal wall, dissected to show the structures of sheath.

MT-099
Superficial muscles of the upper limb

Dissected to show the superficial muscles of the upper limb.



anterior aspect



posterior aspect



MT-097

Muscles of anterior abdominal wall

Dissected to show the superficial muscles of the abdominal wall on one side, the deep muscles of the abdominal wall on the other side.



anterior aspect



posterior aspect



anterior aspect



posterior aspect

MT-101
Superficial comprehensive dissection of the upper limb

Superficial dissected to show the superficial muscles, main arteries and nerves of the upper limb.

MT-103
Superficial and deep combined dissection of the upper limb

Superficial and deep dissected of the whole upper limb to show the muscles ,nerves and main arteries.

MT-100

Deep muscles of the upper limb

Dissected to show the deep muscles of the upper limb.



anterior aspect



posterior aspect

MT-102

Deep comprehensive dissection of the upper limb

Dissected to show the deep muscles, nerves and main arteries of the upper limb.



anterior aspect



posterior aspect



MT-104
Superficial structures of the elbow
Dissected to show the superficial structures of elbow region.



MT-105
Superficial muscles of the forearm
Horizontal section of humerus, dissected to show the superficial muscles of the forearm.



MT-106
Deep muscles of the forearm
Horizontal section of humerus, dissected to show the deep muscles of the forearm.



MT-107
Superficial muscles of the hand
Dissected to show the superficial muscles of the hand



MT-108
Deep muscles of the hand
Dissected to show the deep muscles of the hand.



MT-109
Superficial comprehensive dissection of the hand
Dissected to show the superficial muscles, nerves and main arteries.



MT-110
Deep comprehensive dissection of the hand
Dissected to show the deep muscles, nerves and main arteries.



MT-111
Synovial sheaths of the hand
Dissected to show the synovial sheaths of tendons and fascial spaces of the hand.



MT-112
Flexor tendons and dorsal aponeurosis of the hand
Dissected to show the lumbricales, palmar interossei and dorsal interossei of the hand.



MT-113
Superficial muscles of the lower limb
Dissected to show the superficial muscles of the lower limb.



MT-114
Deep muscles of the lower limb
Dissected to show the deep muscles of the lower limb.



MT-115
Superficial comprehensive dissection of the lower limb
Dissected to show the superficial muscles, nerves and main arteries of the lower limb.



MT-119
Superficial muscles of the leg
Horizontal section of the femur, dissected to show the superficial muscles of the leg.



MT-120
Deep muscles of the leg
Horizontal section of the femur, dissected to show the deep muscles of the leg.



MT-116
Deep comprehensive dissection of the lower limb
Dissected to show the deep muscles, nerves and main arteries of the lower limb.



MT-117
Superficial and deep combined dissection of the lower limb
Superficial and deep dissected of the whole lower limb to show the muscles, nerves and main arteries.



MT-118
Muscles of the hip
Dissected to show the muscles of the hip, unilateral.



MT-121
Superficial muscles of the foot
Dissected to show the superficial muscles of the foot.



MT-122
Middle muscles of the foot
Dissected to show the middle muscles of the foot.



MT-123
Deep muscles of the foot
Dissected to show the deep muscles of the foot.



MT-124
Superficial comprehensive dissection of the foot
Dissected to show the superficial muscles, nerves and main arteries of the foot.



MT-125
Deep comprehensive dissection of the foot
Dissected to show the deep muscles, nerves and main arteries of the foot.



inferior aspect



superior aspect

MT-126
Synovial sheaths of the foot
Dissected to show the synovial sheaths of tendons and fascial spaces of the foot.

Tambien te pueden interesar:

Ligamentum nuchae

The sternoclavicular joint

The left joint integrity, the right side of the incision.

Sagittal section of the temporomandibular joint

Vertebral ligament of the lumbar region

Show the associated ligaments of the lumbar region.

The knee joint (coronal section)

Coronal section, show articular cavity and ligaments.

Forms of muscles

Aset of 4 pieces.

The muscles of the whole head

The whole head, dissected to show masticatory muscles and facial expression muscles.

Muscles of anterior abdominal wall (underpart)

Open the muscles of abdomen, dissected to show the inguinal ring structures.

Deep structures of the elbow

Dissected to show the deep structures of elbow region.

Plantar aponeurosis

Dissected to show the plantar aponeurosis of the foot



EX001
Set of the whole body
sheet plastination slices
Serially cut, horizontal plane,
about 15 mm thk.



EH001
Head slice
Horizontal plane, on the level of upper part of brain.

EH002
Head slice
Horizontal plane, on the level of middle part of brain.

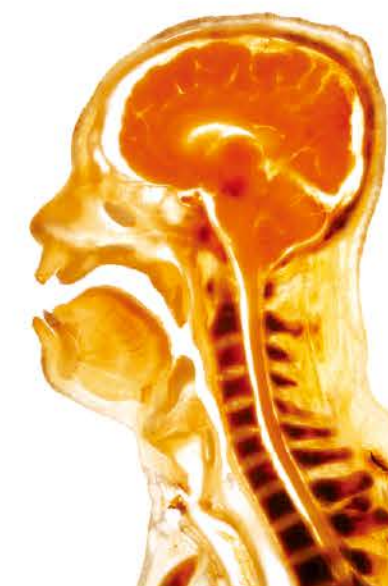
EH003
Headslice
Horizontal plane, on the level of lower part of brain.

EH004
Head slice
Horizontal plane, on the level of paranasal sinuses.

EH005
Headslice
Median sagittal plane.

EH006
Head slice
Parasagittal plane.

EH007
Head slice
Median coronal plane.



EH008
Neck slice
Horizontal plane, on the level of root of neck.

EH009
Neck slice
Horizontal plane, on the level of middle part of neck.

EH010
Head and neck slice
Median sagittal plane.

EH011
Set of head slices, 10, 3
Serially cut, horizontal plane, about 10 slices, 3mm thk.

EH012
Set of head slices, 10, 3.
Serially cut, coronal plane, about 10 slices, 3mm thk.

EH013
Set of head slices, 10, 3.
Serially cut, sagittal plane, about 10 slices, 3mm thk.

EH014
Set of head and neck slices 10, 8, 2, 3.
Serially cut, horizontal plane, about 10 slices, which 8
head slices and 2 neck slices, 3mm thk.



ET001
Trunk slice
Horizontal plane, on the level of shoulder

ET002
Trunk slice
Horizontal plane, on the level of lungs

ET003
Trunk slice
Horizontal plane, on the level of heart

ET004
Trunk slice
Horizontal plane, on the level of spleen

ET005
Trunk slice
Horizontal plane, on the level of pancreas

ET006
Trunk slice
Horizontal plane, on the level of liver

ET007
Trunk slice
Horizontal plane, on the level of small intestine



ET008
Trunk slice
Horizontal plane, on the level of kidneys



ET009
Trunk slice
Horizontal plane, on the level of female ovaries
(the superior part of urogenital system)

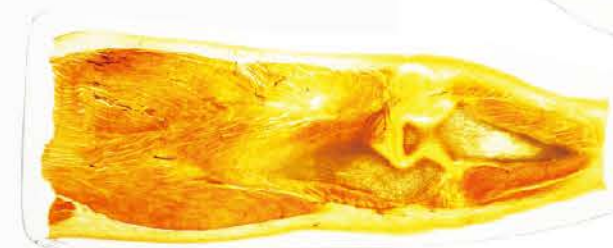
ET010
Trunk slice
Horizontal plane, on the level of female urinary bladder
(the middle part of urogenital system)

ET011
Trunk slice
Horizontal plane, on the level of female vagina
(the inferior part of urogenital system)

ET012
Trunk slice
Horizontal plane, on the level of male seminal vesicles
(the superior part of urogenital system)

ET013
Trunk slice
Horizontal plane, on the level of male testes
(the inferior part of urogenital system)

ET014
Set of trunk slice
Serially cut, sagittal plane, about 30 slices, 3mm thk.



EU007

EU001
Upper limb slice
Horizontal plane, on the level of arm

EU002
Upper limb slice
Horizontal plane, on the level of elbow

EU003
Upper limb slice
Horizontal plane, on the level of forearm

EU004
Upper limb slice
Horizontal plane, on the level of wrist

EU005
Upper limb slice
Horizontal slice of the elbow joint

EU006
Upper limb slice
Sagittal slice of the hand



EU009

EU007
Upper limb slice
Coronal plane, on the level of elbow joint

EU008
Upper limb slice
Sagittal plane, on the level of elbow joint

EU009
Upper limb slice
Coronal plane, on the level of hand

EU010
Set of arm slices
Serially cut, horizontal plane, about 10 slices, 3mm thk.

EU011
Set of forearm slices
Serially cut, coronal plane, about 10 slices, 3mm thk.

EU012
Set of elbow slices.
Serially cut, sagittal plane, about 3 slices, 3mm thk.

EU013
Set of hand slices
Serially cut, coronal plane, about 30 slices, 3mm thk.



EU008



EL009



EL008

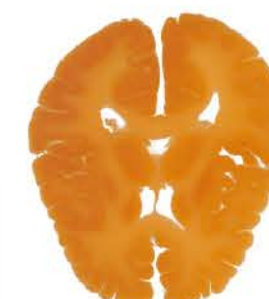
- EL001**
Lower limb slice
Horizontal plane, on the level of hip
- EL002**
Lower limb slice
Horizontal plane, on the level of thigh
- EL003**
Lower limb slice
Horizontal plane, on the level of knee
- EL004**
Lower limb slice
Horizontal plane, on the level of leg
- EL005**
Lower limb slice
Horizontal plane, on the level of ankle
- EL006**
Lower limb slice
Horizontal plane, on the level of metatarsal bone
- EL007**
Lower limb slice
Horizontal plane, on the level of knee joint

- EL008**
Lower limb slice
Sagittal plane, on the level of foot
- EL009**
Lower limb slice
Coronal plane, on the level of knee joint
- EL010**
Lower limb slice
Coronal plane, on the level of foot
- EL011**
Set of thigh slices
Serially cut, horizontal plane, about 10 slices, 3 mm thk.
- EL012**
Set of leg slices
Serially cut, horizontal plane, about 10 slices, 3 mm thk.
- EL013**
Set of knee joint slices
Serially cut, sagittal plane, about 5 slices, 3 mm thk.
- EL014**
Set of foot slice
Serially cut, sagittal plane, about 5 slices, 3mm thk.



EB001

- EB001**
Brain slice
Horizontal plane, unspecified level.



EB002

- EB002**
Brain slice
Horizontal plane, on the level of basal nuclei, with the integrity internal capsule.



EB003

- EB003**
Brain slice
Coronal plane, unspecified level.



EB004

- EB004**
Brain slice
Median coronal plane



EB005

- EB005**
Brain slice
Sagittal plane, unspecified level



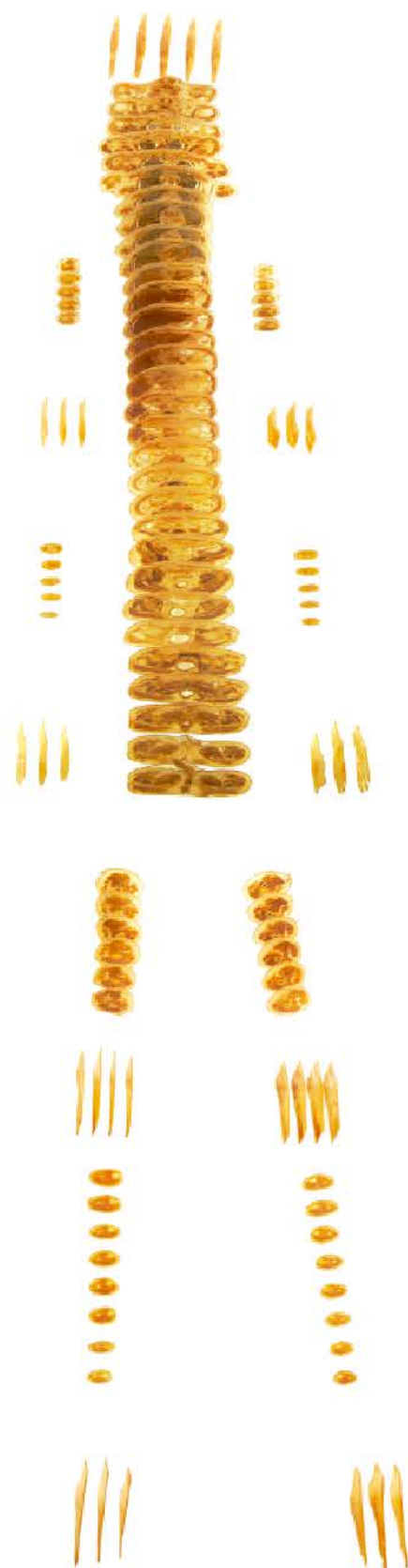
EB006

- EB006**
Brain slice
Median-sagittal plane

- EB007**
Set of forearm slices
Serially cut, horizontal plane, about 10 slices, 3 mm thk.

- EB008**
Set of elbow slices
Serially cut, coronal plane, about 3 slices, 3 mm thk.

- EB009**
Set of hand slices
Serially cut, sagittal plane, about 3 slices, 3 mm thk.



EW001

Set of the whole body slices

Serially cut:
head 5 slices
trunk 31 slices
limbs 74 slices
about 110 slices;

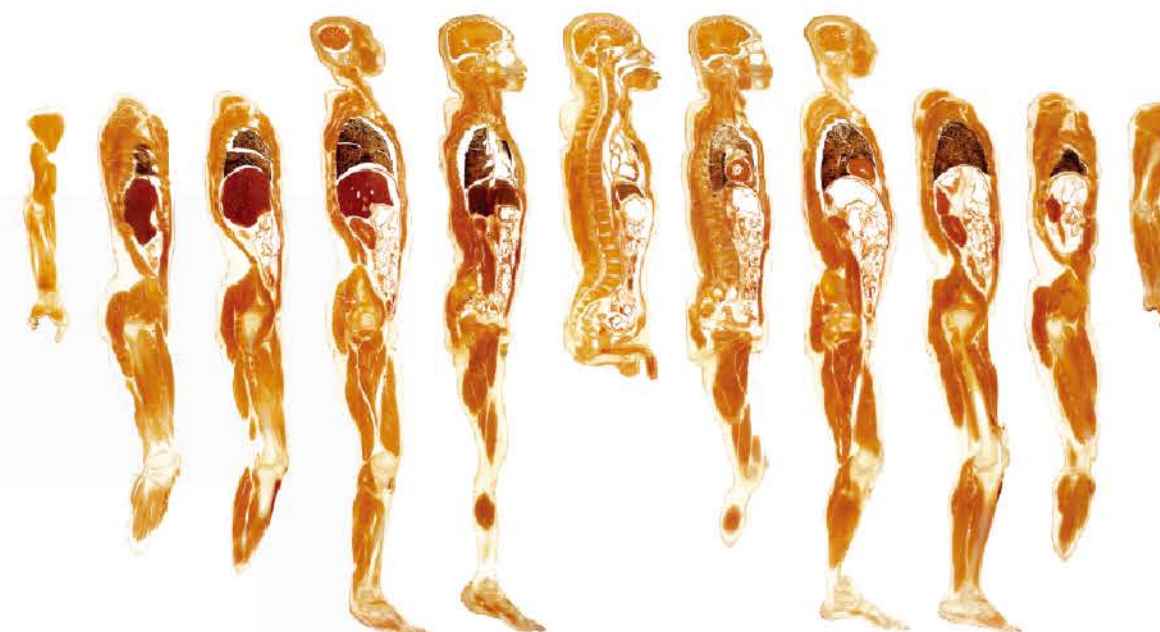
Sagittal plane of head, elbow,
hands, knee and foots, horizontal
plane of the rest.

EW002

Set of the whole body slices

Serially cut:
head 8 slices
trunk 32 slices
limbs 100 slices
about 140 slices;

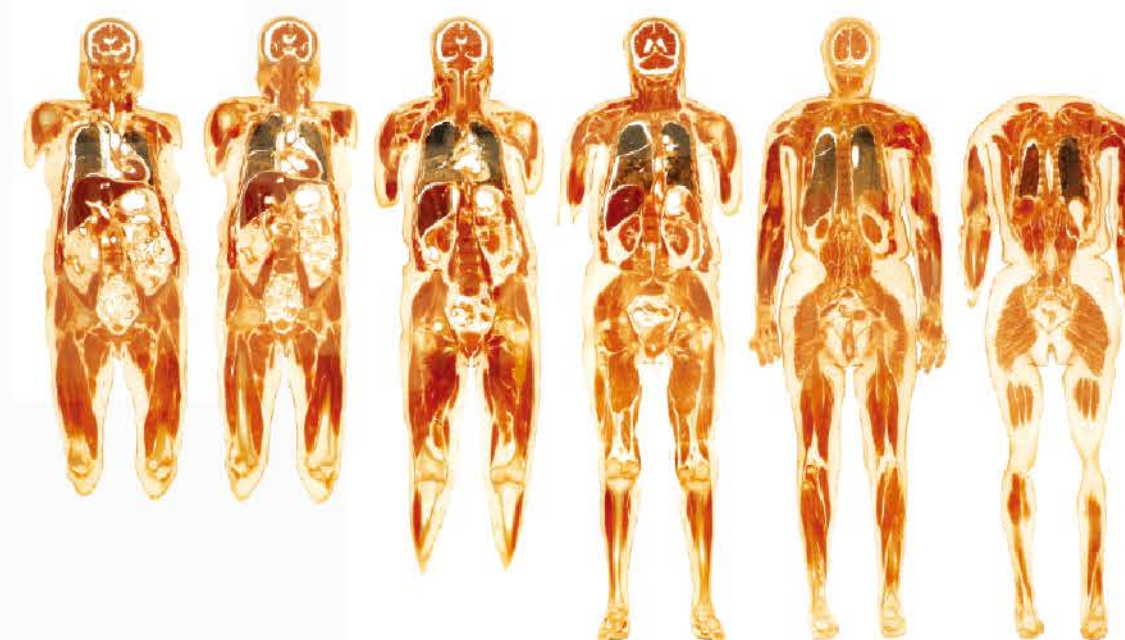
Sagittal plane of head, elbow, hands, knee
and foots, horizontal plane of the rest.



EW003

Set of the whole body slices

Serially cut, sagittal plane, about 11 slices



EW004

Set of the whole body slices

Serially cut, coronal plane, about 6 slices